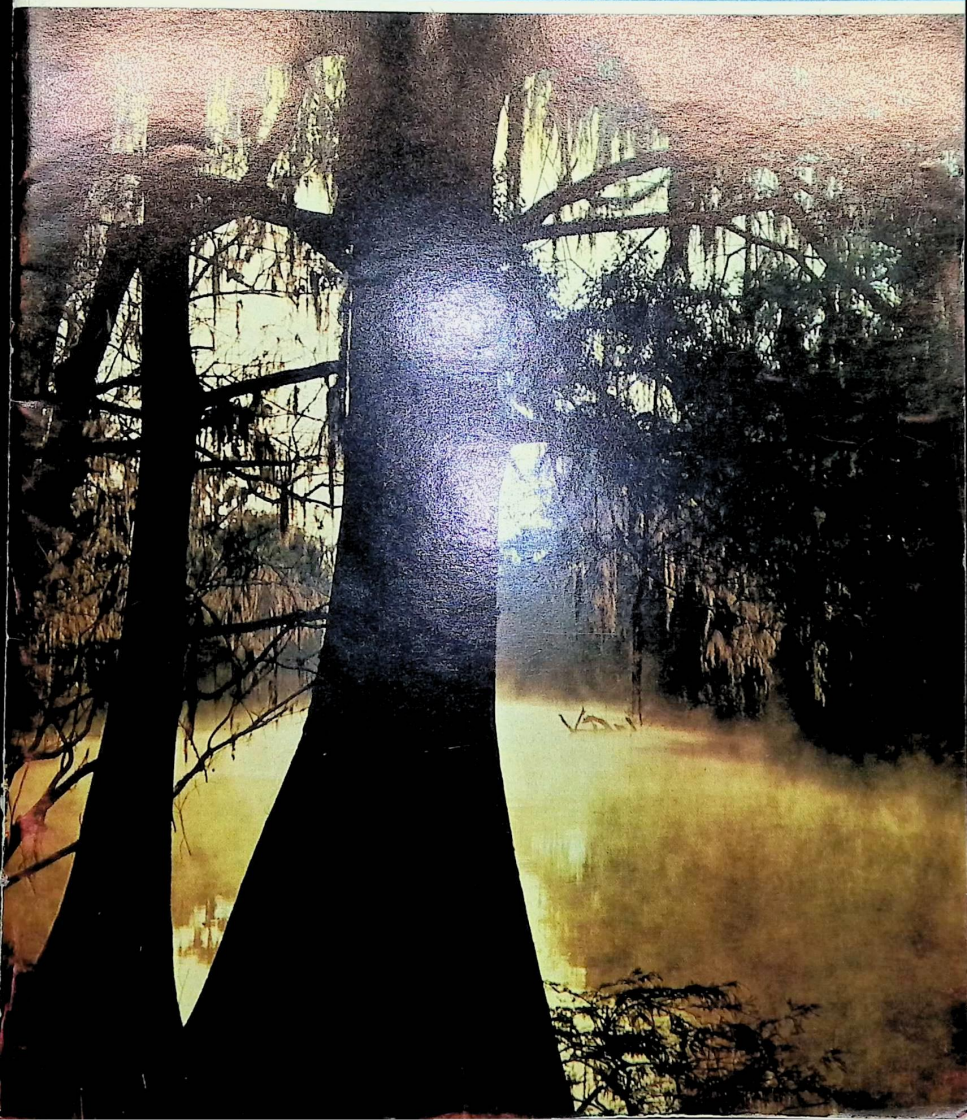



JANUARY – FEBRUARY 1972

FLORIDA GARDENER



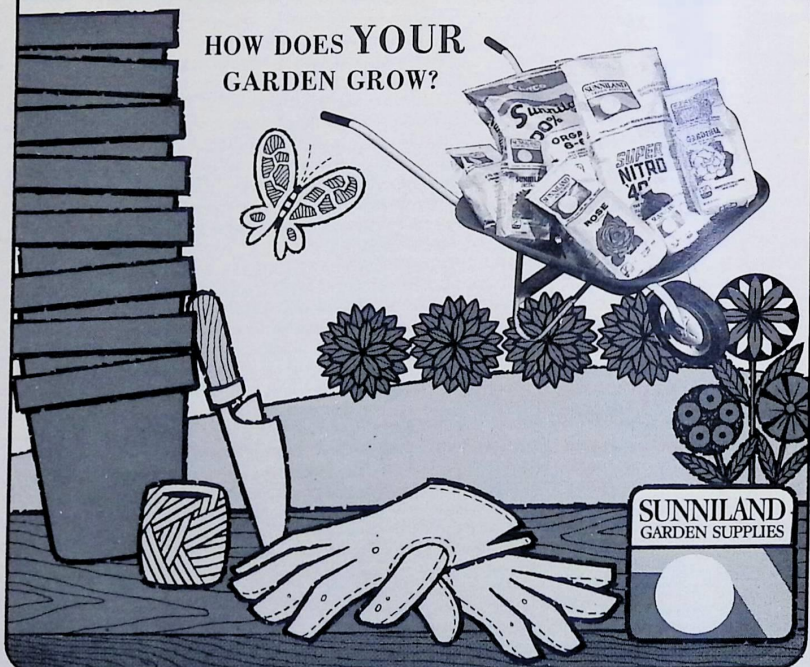


COMMITMENT
TO SERVE MAN
AND PRESERVE NATURE

We consider our job to be two-fold:
to serve the community while protecting
the environment and its natural beauty.



HOW DOES YOUR
GARDEN GROW?





THE FLORIDA GARDENER

The Official Publication of the
Florida Federation of Garden Clubs, Inc.
non-profit organization

Member of National Council of
State Garden Clubs, Inc.

HEADQUARTERS: 1400 S. Maitland Avenue,
Winter Park, Florida
Mrs. Andrew A. Gurke, President

Volume 20 1972 Issue 3

Editor: Mrs. Jack Allen, P.O. Box 23577

Fort Lauderdale, Fla. 33307

Circulation Mgr: Mrs. James Blaschik

P.O. Box 23577

Fort Lauderdale, Fla. 33307

Advertising Editor: Mrs. Crowel Dawkins, Jr.
4705 Clear Ave., Tampa, Fla. 33609

ASSOCIATE EDITORS

District I: Mrs. Earl W. Wallis
118 Park Ave., Milton 32570

District V: Mrs. Wm. E. Rion
3454 N.W. 10th Ave.
Gainesville 32601

District VIII: Miss Helen Gullgren
5691 Grove St. S.,
St. Petersburg 33705

District IX: Mrs. Larry Rollins
P.O. Box 633
Winter Haven 33880

District XI: Mrs. Robert Phillips
P.O. Box 5607
Lighthouse Point 33064

ADVERTISING CREDITS:

Mrs. Leroy Crooks
Mrs. Milburn W. Paulk
Mrs. Edward F. Smithers
Mrs. Sam G. Vercoe

Cover Photo Credit

Photo by **MR. JAMES A. KERN**

Published bi-monthly, Sept. through June, 5 times/yr., by the Florida Federation of Garden Clubs, Inc., a non-profit organization. Subscription 50¢ annually, included in dues, \$1.25 per year to non-members, 35¢ per single copy, 50¢ single copy of back issues. Second-class postage paid at Fort Lauderdale, Florida.

Subscribers: Please send subscriptions, change of address to Circulation Manager.

Postmaster: Please send unclaimed complete copies + Form 3579 to Circulation Manager, P.O. Box 23577, Fort Lauderdale, Fla. 33307.

ERRATUM:

NOVEMBER/DECEMBER ISSUE:

BROMELIAD FRONT COVER

"X NEOPHYTUM

VARIETY LYMANII"

and

"COMMON FALLACIES

REGARDING AQUIFER WATER"

Reprinted by Permission,

The Environmental Information

Fla. Conservation Foundation, Inc.,

Winter Park

DEADLINE

MARCH/APRIL ISSUE

Editorial: January 15
Advertising: February 1
Circulation: February 20

COVER STORY

The beautiful and stately cypress trees are growing on the banks of the Santa Fe River in O'Leno State Park. The park is located 6 miles north of High Springs and 20 miles south of Lake City, on U.S. 41-441. The park features well-planned nature trails, which will enable one to enjoy the natural beauty of the area. Many wild animals may be seen in this park.

The park has one of the outstanding group camps in the southeast. The Junior Nature Camp of FFGC will use the camp facility for the third consecutive year in 1972.

ANNOUNCING—FREE-HAND SMOKEY BEAR COLORING CONTEST



Sponsored by National Council of State Garden Clubs, Inc.

Enter the Free-Hand Smokey Bear Coloring Contest. Design a poster to help Smokey prevent forest fires.

Your ideas will do much to keep America's forest green and beautiful, and the rivers and lakes clear and sparkling.

Forests are wonderful places to camp, hike, swim, and play. They also supply more than 5,000 valuable products, including the things you will need to produce your fire prevention poster—your pencil, your desk, and the paper for the drawing.

LET'S JOIN FORCES WITH SMOKEY!

SMOKEY BEAR POSTER CONTEST RULES FOR JUNIORS

1. Posters will be judged on originality, artistic quality, and message effectiveness.
2. Poster dimensions must be either 8½" x 11" or 13" x 18½".
3. Age levels: 6-8, 9-11, 12-14.
4. Entries must be identified by name, address, and age.
5. Only one entry per individual.
6. Final judging will be made by National Projects Chairman, National Council of State Garden Clubs, Inc. not later than March 14, 1972.
7. Participant need not be a member of an affiliated Junior Garden Club.
8. Winners will be announced and prizes awarded at the National Council of State Garden Clubs, Inc. Convention in Cleveland, Ohio, May 1972.
9. Contact your local Garden Club or Forest Service Office for mailing instructions.

U.S. Department of Agriculture, Forest Service

September 1971.

President's Message



As one can tell by looking at a calendar we are fast approaching the second half of the club year. Our programs and projects are in full gear.

From the first newsletter regarding "People and Their Environment" project, Florida is leading in number of volumes placed in schools by garden clubs followed closely by Texas. The President of that State is trying hard to overcome this as well as passing us in total memberships. Even if we are first we will have to try harder.

The time for the Deep South Regional Convention will soon be here in Jacksonville March 8-10, 1972. Remember the Florida Federation is serving as hostesses for the six States involved—Alabama, Florida, Georgia, Louisiana, Mississippi and Tennessee. We need the assistance of every member to help make this a success as well as our State Flower Show starting on March 10th in the same area. As we are applying for a National Award for this Show, we need the support of everyone. "Boldly We Search" is indeed a challenge.

Plans are being formulated for a

pilot conference in our State regarding youth activities in cooperation with the National Council of State Garden Clubs. The National President, Mrs. Maxwell W. Steel and the National Conservation Chairman, Miss Charlotte Mason selected Florida for this meeting because of its record of outstanding programs with Junior and High School Gardeners. We need to work with our youth now more than ever. They are vitally interested in the world about them. They are seeking our assistance to help keep our land clean and green.

We need to keep vitally interested and involved in our communities. Many of the issues in ecology arise because of lack of knowledge. It is one of our duties as garden club members to help others in the elimination and prevention of these problems in our areas and create a love of nature in their place.

It is hoped that clubs have planned to celebrate Arbor Day this month. This is the centennial year. It was started in Nebraska in 1872.

Let us start this new year with these aims and ideals and go forward with "Friendship and Unity in Gardening."

Cordially yours,

Mrs. Andrew A. Gurke



CHECK PRESENTATION from 1971 convention profits, St. Louis, Missouri. From left to right: Mrs. Carroll O. Griffin, Mrs. Chester Schomp, Mrs. Ralph A. Parker, Mrs. Andrew A. Gurke, Mrs. Maxwell W. Steele, Mrs. Maurice S. Dillingham, Mrs. Vernon L. Conner, Mrs. Charles H. Blanchard, Sr.



State Life Members

STATE LIFE MEMBERS:

- 639 Mrs. Joseph Rey
5450 Essex Court
West Palm Beach
- 640 Mrs. S. J. Mitchell
P. O. Box 589
Madison, 32340
- 641 Mrs. Howard Kline
1410 Sugar Pine Road
Apopka 32703
- 644 Mrs. A. Santille
5706 N. Davis Hwy.
Pensacola, 32503

Mrs. Milburn W. Paulk, District IV, was unable to be present when the group picture was taken at Headquarters. As editor I selected this one for TFG. The opossum found in Gladys's petunia bed was seeking refuge from the bulldozers cleaning a wooded area nearby. And it has been returning intermittently as she puts out food.

HONORED BY:

- Founders Circle of the West Palm Beach Garden Club
- Begonia Circle, Garden Club of Gainesville
- Merritt Park Circle, Orlando Garden Club
- Ivy Garden Club of Gulf Breeze and the Greater Pensacola Area

QUOTATIONS BY IAN L. McHARG

"Any time you see a plant . . . just know that it is engaged in the most profound creativity in the world, without which there would be no world; that all life is dependent upon the plant."

* * * * *

"The world is proceeding independent of man. It did without him for two and one-half billion years. If he extirpates himself, evolution will move back to that last step that remains, and the process will proceed again—presumably without brains."

* * * * *

"All things that live come from the same origin. We are united by all forms of life. . . . So to destroy something else is self-mutilation."

* * * * *

"A halo on algae is no more or less ridiculous than a halo on man."

READ THE ADS AND PATRONIZE OUR ADVERTISERS!!!

Editorial

"ADVENTURE IS NOT IN THE GUIDEBOOK AND BEAUTY IS NOT ON THE MAP." SEEK AND YOU SHALL FIND. As we embark on a new year our greatest challenge is to use our energies and talents to expand our youth programs, and provide opportunities for them to have closer contacts with our natural world. Remember they are the leaders to tomorrow!

Discuss these articles with your friends:

Conservation

Activities other districts

Horticulture Foreign Tours

State Flower Show

Tropical Short Course

Only four districts have shared happenings and ideas. . . . What is your district doing? Let the editor know in a 100 words or less.

TFG SALUTES: Mrs. Leroy Crooks, Mrs. Milburn W. Paulk, Mrs.

Edward F. Smithers and Mrs. Sam G. Vercoe, they have increased our percentage of advertisements; membership chairmen for following circulation guidelines; and probationary clubs (circle) subscribing to TFG—Spanish Trail (PFGC), Crystal River, Inverness, Tiffany, Miami and Surfside, Cocoa Beach.

Copy (original and legible duplicate) deadline next issue January 15!

"YESTERDAY IS ALREADY A DREAM. TODAY, WELL LIVED, MAKES EVERY YESTERDAY A DREAM OF HAPPINESS, EVERY TOMORROW A VISION OF HOPE. LOOK WELL, THEREFORE, TO THIS DAY (YEAR)."—FROM THE SANSKRIT "SALUTATION TO THE DAWN."

Yours for clearer footsteps in 1972,

Sallie Allen, Editor

Calendar of Events

COMING EVENTS 1972

Arbor Day	January 21
Deep South Regional Meeting, Jacksonville	March 8-10
State Flower Show, Jacksonville	March 10-12
Blanche Covington Nature Study Course, O'Leno S. Park	April 23-29
Bird Day	May 1
State Convention, Sarasota	May 2-4
LDS Course II, Series VI, Jacksonville	May 10-12
NCSGC Convention, Cleveland, Ohio	May 13-18

BOARD OF DIRECTORS MEETING

Headquarters, Winter Park Jan. 18-19, 1972

1973 STATE CONVENTION, ORLANDO

1974 STATE CONVENTION, TALLAHASSEE

FOREIGN TOURS 1972

Miss Mary Noble

Want to take a trip? FFGC tours will take you anywhere in the world you want to go! Check these eight exciting trips for 1972, bring your family and friends, and travel with congenial companions. Brochures will be mailed to all members in January. Meantime, mark your calendar and pack your bags.

All tours depart from Miami for your convenience, economy and safety.

1972 TRAVEL PROGRAM FLORIDA FEDERATION OF GARDEN CLUBS

Thomas S. Duffy, Inc. Travel Management
FFGC Chairman: Miss Mary Noble

TRIP 1 - SOUTH PACIFIC HIGHLIGHTS

22 unhurried days of fun visiting Tahiti, Bora Bora, North and South Islands of New Zealand to enjoy Auckland, Rotorua, Christchurch and Mt. Cook. In Australia Canberra, Sydney and Melbourne will be seen. A final two days in the Fiji Islands will wind up a marvelous First Class Tour.

Departure: March 1, 1972

Cost from Miami: \$1,975.

TRIP 2 - THE BRITISH ISLES

A comprehensive, in-depth visit to the beautiful and unusual areas of Scotland and England. Particular emphasis will be made upon visits to the outstanding Estates and Gardens, Potteries, Silverware Centers to Antique Shops. In London we will have a 3-day course on silvery, jewelry and porcelain conducted by a leading authority and one on painting and sculpture. The Chelsea Flower Show is included. And, too, there are many extra entertainment features on this great 18 days Tour.

Departure: May 8, 1972

Cost from Miami: \$1,375.

TRIP 3 - MIDDLE EUROPE AND THE BALKANS

It's different. It's beautiful. It's the next big tourist area. It's the exciting Middle Europe of Prague, Czechoslovakia, Bucharest, Rumania, Warsaw, Poland, Berlin, East Germany. This marvelous Tour combines the charm of Eastern and Western Europe blended together. You'll stay at Deluxe, old World, hotels and enjoy an unusual, delicious cuisine. Shopping opportunities, too! 16 Days.

Departure: June 10, 1972

Cost from Miami: \$895.

TRIP 4 - CRUISE THE NORTH CAPE AND FJORDS

Summer has a special loveliness in the fabled land of the midnight sun. This cruise highlights the spectacular scenic grandeur of Western Norway's Fjord Coast. Then beyond to the Polar Pack Ice, 600 miles from the North Pole. You'll visit Copenhagen, Oslo and Leningrad. 20 Days on the magnificent M.S. Victoria.

Departure: July 28, 1972

Cost from Miami: from \$1,2500 to \$2,000.

TRIP 5 - SCANDINAVIA AND RUSSIA

This is surely one of the best travel buys today. At a reasonable cost, you'll see so much—seven lands . . . three within the Soviet Union. Seven famous capitals of Norway, Sweden, Denmark, Finland, Estonia, Russia, and Latvia as well as

many other interesting cities. It's a travel experience of a lifetime—and still not rushed—31 Days. Deluxe throughout.

Departure: June 10, 1972

Cost from Miami: \$1,985.

TRIP 6 – FRANCE

Le Bon Voyage exclusif! Five nights and four never-to-be-forgotten days in Paris, three days touring Normandy and Brittany, two days of enchantment seeing Chateaux of the Loire Valley, two days on the Cote D'Argent in Biarritz, two days in medieval-walled Carcassone, Avignon for two days and three days on the magnificent Cote D'Azur . . . Plus Poitiers, Charente Valley, Bordeaux, scenic drive through the Pyrenees, Lourdes, Nimes, Arles, St. Tropez, Cannes and Monte Carlo. Special Events, superb Cuisine! 22 Days.

Departure: September 8, 1972

Cost from Miami: \$1,650.

TRIP 7 – LONDON THEATRE TOUR

Afraid to go to New York? See the shows in London this winter. Eight days. Price includes transportation, sightseeing, theatre tickets, first class hotel, some meals.

Departure: February 15, 1972

Cost from Miami: \$385.

TRIP 8 – SPAIN, PORTUGAL, MOROCCO

Fly Miami-Lisbon, motor through Portugal and Spain, cross the Mediterranean into exciting Morocco. A bargain 15-day tour.

Departure: April 10, 1972

Cost from Miami: \$495.

TROPICAL SHORT COURSE

“Grow Green – Keep Florida Clean”

Broward Community College, State Road 84, just off the Sunshine Parkway will host the 16th Annual Tropical Short Course January 25 and 26, 1972. Mr. Dudley A. Palmer, Instructor, Broward Community College is working with the committee to set up one of the finest courses we have ever offered. Drought resistant plants and plants particularly suited to our future ecological problems will be discussed by Mr. Tim Anderson, Horticulturist, Fairchild Tropical Garden. Mr. Palmer will continue this study by presenting methods of coping with drought and cold. Fern Culture is one of our topics, taken up by Mrs. William C. Knox. There will be a panel discussion on what's new in the horticulture field with time for questions. Special government services available to gardeners for the asking will be revealed. The artistic designer is Mrs. Rodney B. Radford.

Broward Community College has some real surprises in store for our students. We know you will enjoy every minute of the two day course. Classes begin at 9:00 A.M.

Advance registration should be sent to Mrs. E. O. Williams, 2601 Acacia Court, Fort Lauderdale, Fla. 33301. Entire course is \$6.00 One day is \$4.00

Districts

MASSACHUSETTS HORTICULTURAL SOCIETY releases the names of Florida winners in the 38th Annual Garden Club Yearbook Contest.

WEST PALM BEACH GARDEN CLUB, INC. FIRST PRIZE (\$50)
IVY GARDEN CLUB of Pensacola A FIFTH PRIZE
NORTH MIAMI GARDEN CLUB HONORABLE MENTION

All winners also receive complimentary subscriptions to the magazine. The Horticulture Magazine is dedicated to the advancement of gardening.

Yearbooks for the 1971 contest are now being accepted and entries should be addressed to **Garden Club Yearbook Contest, Horticulture, 300 Massachusetts Avenue, Boston, Mass. 02115.**

The members of the **Abelia Garden Circle of the Garden Club of Jacksonville** were motivated into researching tetanus (lockjaw) by the loss of a valuable member, **Mildred Ross**. They received the following information from the Immunization Department of Florida. In 1970 fifteen cases were reported in Florida, which resulted in eight deaths. Also, there were 137 cases reported in the Nation and Florida ranked first.

Tetanus increases in women after the age of 35, proportionately.

Florida gardeners and gardeners everywhere are urged to protect themselves and prevent needless deaths. **Have you been immunized?** (Factual information—Mrs. Floannel Faqua McMath.)

Junior Gardener leaders in District I, IV and XI are deviating from the regular program of only working with school groups. Some junior groups meet in homes and the horticulture lessons are always in an outdoor class room. Others coordinate programs with 4-H groups, boys club, Scouts and an oral school. The meetings are held weekly, bi-monthly and/or

monthly. The ages range from pre-school through the eighth grade. (TFG salutes our **Junior Gardener Leaders!** -Editor)

The **Althea Circle of the Pensacola Federation** will be "gardening with emphasis on rotational blooming periods." The 26 members of the circle have challenged the other 37 circles of PFGC to join them in converting Pensacola into a floral tapestry. They have a dream of inspiring all visitors to go home and plant, which includes all clubs and circles of FFGC. **The Camellia 1971.**

DISTRICT VIII "UN-CAN-NEE CONTEST" WINNERS

The "Un-Can-Nee" winners were announced at the President's conference, June 2, at the Sheraton Motor Motel in Tampa.

The \$25 checks were presented by **Dr. Don L. Foxworthy**, donor and was assisted by **Mrs. Andrew A. Gurke**, **President FFGC.**

WINNERS WERE: Class 1—**Zephyrhills Garden Club, Founders Circle** with 1,090.5 pounds. Class 2—**The**

Garden Club of St. Petersburg, Bahama Circle with 58.5 pounds. Class 3—Dade City Garden Club, Hibiscus Circle with 253.11 pounds. With the exception of 3 or 4 of the ladies in this group, all are over 70 years of age. The cans were collected and kept in Mrs. Fairty's garage. Her comment was, "I hope the people won't think I drank

all this beer."

Also attending the luncheon was Mr. James Metcalf, representative for the Reynolds Metal Company.

Approximately 180,000 cans were collected with at least 40% of "GREAT EIGHT" participating. (Factual information Mrs. Don L. Foxworthy)



Pictured left to right:

Mrs. Alva Chapman, Founders Circle, Mrs. Don Foxworthy, Anti-Litter Chairman, Mrs. Anna Fairty, Hibiscus Circle, Dr. Don L. Foxworthy, Mrs. Andrew A. Gurke and Mrs. N. B. Henderson, Bahama Circle.



Directors, Districts VII, V, III, II, and I. From left to right: Mmes. James F. Hussey, Hugh C. Simmons, E. H. Ellison, George W. Horne and Olen Brown.

JUNIOR NATURE CAMP DATES

July 21 – August 12, 1972

Registration Chairman

Mrs. Ray C. Knopke

515 River Hills Drive

Temple Terrace 33617

Fee – \$40

TWO NEW
ADDITIONS TO
HEADQUARTERS'
FILM LIBRARY

COMMUNITY ACTION
LASSIE'S
LITTER BIT

A NATION
OF SPOILERS

16 mm SOUND—showing
time approximately 30 min-
utes. Service fee \$1.00 each
plus insured postage both
ways.



Junior gardeners of District IV took part in a ceremony in Jacksonville entitled "From Little Acorns . . ." It entailed gathering acorns from the "Treaty Oak" (so named because a treaty with the Indians was supposedly signed beneath its boughs), planting them and next year at least 10,000 seedlings will be planted to perpetuate this aged tree. This perpetuation will be a part of Jacksonville's Sesquicentennial program, January 1-June 15, 1972.

DISTRICT XI

The Garden Club members and guests attending the district meeting were privileged to hear and see the story of the Junior Nature Camp as told by Mrs. Dewey Villareal, Jr. who provided color slides to illustrate the story showing the growth and functions of the camp and its activities.

Mrs. C. R. Mays' gift contribution made possible the building of the first cabin on the new camp site. Mrs. Edwin E. (Loretta) Brackebush has been appointed chairman of the fund raising committee for the building of the new camp.

Mrs. E. Robert Hunter, State Horticulture Chairman spoke on bromeliads. Exhibits of fruit and garden displays were presented by District XI Chairmen. It was a real pleasure to discover that on the subjects of ecology and environment, the leaders and enthusiastic teachers of conservation are the young. One 20 year old, Carole Kent, Secretary of Ecology Action of Florida centered in Miami, told of the efforts of the Center to unify people and guide them toward the goal of "SAVING" water and other resources. Miss

Susan Cook, a young lady who has the distinction of being the only lady forester in the State of Florida, is with the Division of Forestry located on Route 84 in Fort Lauderdale. The main office of the Division is located in Tallahassee and is available for consultation on what to plant in certain areas and what to do for ailing plants. The Division is interested in working with groups in planting trees in school locations and other civic areas. Mrs. Sharon Davis, the South East Field Representative for the Nature Conservancy, told the story of the national non-profit conservation organization founded in 1951. Their purpose is to buy land to hold as preserves of wild animal and plant life, thus "SAVING" land rich in natural resources from the fate of the bulldozer. They have currently saved 30,000 acres in the State of Florida and hope to add to this soon bringing the total to 60,000 acres. They have 29,000 members in the nation, with 900 of these in the State of Florida. The membership fee is \$10.00. The organization has working arrangements with 100 universities now using the saved land for teaching and research. The work of these peo-

continued page 17

CONSERVATION

NATIONAL NEWS . . .
KEEP AMERICA BEAUTIFUL INC.

November 12, 1971, Washington D.C. KAB presented the third annual "Litter-Prevention" award. The winner: Mrs. Cyril G. Fox of Media, Pennsylvania. Also cash awards were presented to two men and two women in the "First Anti-Litter Photography" contest, which will be continued in 1972. Entry blanks for next year's ALP contest are now available and the deadline for entries is May 1, 1972.

Write to: Keep America Beautiful, Inc., 99 Park Avenue, New York, N.Y. 10016, for additional information and contest blanks for the Photography Contest.

KAB FACT SHEET

Litter is a National Disgrace!

Litter cleanup of public areas costs an estimated \$500,000,000 annually.

If you add the cost of litter from private property, the annual National litter bill approaches \$1 billion.

Litter is a health and safety menace.

Who litters? According to a Gallup survey, all segments of the population do.

Adults between the ages 21 and 35 litter three times as much as people over fifty and nearly twice as much as those in the 35-49 age bracket. Men litter nearly twice as much as women.

KAB also serves as a clearing house for litter-prevention techniques and materials; encourages volunteer groups to cooperate closely with governmental agencies which are working to eliminate litter; and counsels and assists thousands of groups throughout

the country.

HOW YOU CAN HELP! Keep your home and property litter free, dispose of trash properly, carry litter bags in your car and boat—and use them.

Garden Club Survey:

1. Not enough programs are working.
2. Consistency gets results, but too many communities aren't dealing with the litter problem on a year-round basis.
3. Cooperation is vital and equipment, education and enforcement can make the difference between a successful or unsuccessful program.

This survey verifies what the Litter Letter has always advocated. A litter-control program will produce maximum results only if it is consistent and cohesive. It must be a year-round effort involving all available community resources. And it must make full use of equipment, education and enforcement to achieve results.

—THE LITTER LETTER VOLUME 26

Mrs. Ralph A. Parker
National Anti-Litter Chairman



"UNITING"

A gift of 970 acres from the Cummer Company of Jacksonville to The Nature Conservancy was announced at the luncheon banquet of the Florida Forestry Association, annual meeting in Daytona Beach. Dr. Thomas W. Richards, President of the Conservancy awarded Mr. Wellington Cummer, Vice President of the Florida based timber company, a certificate of

appreciation for "one of the most significant gifts of land ever preserved in Florida by a forest products industry." The 970 acre tract is located along 4½ miles of the lower Suwannee River, in Levy County, near Chiefland.

MILLION DOLLAR GIFT

Washington, D.C.—A gift of some 7,000 acres of critical wetlands by the Georgia-Pacific Corporation, and the decision to purchase an adjoining 19,500 acres by the State of Florida, was announced today jointly by The Nature Conservancy, Georgia-Pacific Corporation, and the State of Florida.

The announcement following today's meeting of the Executive Board

of the Department of Natural Resources came after some two years of negotiations directed by The Nature Conservancy and the day before the option obtained by the Conservancy was to expire. The area to be preserved involves land owned by Georgia-Pacific, valued by industry sources in excess of \$2.7 million. The gift portion of the marsh and mangrove area is valued at more than \$1,000,000. The land will be transferred to the State of Florida for \$1.7 million.

The Nature Conservancy is the only national non-profit conservation agency dedicated to the preservation of natural areas for science, educational and aesthetic values.

"PHILOSOPHY OF TIMBER HARVESTING"

"The timber industry is developing methods to harvest timber to satisfy both the ecological interests and the

need for more profitable practices."

An official of a large timber products company said that it is possible to clearcut a forest in an aesthetic manner that will not leave the harvested area looking like Iwo Jima after the invasion.

This was a cooperative undertaking by the company and the government in the Teton National Forest in Wyoming. The undertaking was an experimental logging operation on four tracts of timberland.

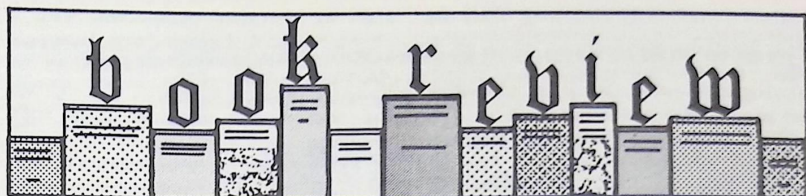
Ingenious machines were built for the experiment, and with the special equipment, waste is virtually eliminated.

The impact on the forest environment is held to a minimum, and two or three years are gained in the reseeding operation. One machine reduces the entire tree-tops, branches and leaves—to chips. This eliminates the traditional slash burning procedure.

The method is an example of the kind of preservation—and uses—of resources embodied in a positive environmental philosophy that permits



continued page 21



"You CAN Grow Phalaenopsis Orchids" by Mary Noble; 148 pages, paper cover, 8 color plates, many illustrations and line drawings; published by the author, 3003 Riverside Avenue, Jacksonville, Florida 32205. Price \$3.95.

Miss Noble's newest orchid book on the genus *Phalaenopsis* and its related genera, competently and thoroughly covers the subject in language the layman can understand.

Interesting history of early discoveries, listing and descriptions of the species, and development of today's fine hybrids in the whites, pinks, yel-

lows and novelties are well presented in a brisk, informative and readable style.

Three color plates, from paintings by Marion Sheehan, show the various species in 1/2 actual size, a useful reference for the hobby grower who sometimes finds word descriptions difficult to understand. Of interest is the listing and makeup of 22 man-made multigenetics with *Phalaenopsis*, plus the multi-generics of *Doritis* and *Kingiella*, two closely related genera.

Miss Noble's chapters on culture and problems are excellent and should encourage more hobbyists to grow the beautiful moth orchids even though they require a little extra specialized understanding and care.

Flower arrangers will enjoy the photographs of phals used in quick and easy arrangements.

"You CAN Grow Phalaenopsis Orchids" will be a valuable addition to your library and should be on everyone's Christmas "want list." The book is available at bookstores, orchid nurseries and garden shops or by order from the author.—I.W.V.

THE NATCHEZ PILGRIMAGE

Natchez-On-The-Mississippi

March 4 through April 2, 1972
30 Antebellum Houses Open

CONFEDERATE PAGEANT

Depicting Scenes of the Old South

Monday, Wednesday, Friday,
Saturday nights

For information about group or
individual tours, write

P. O. Box 347
Natchez, Mississippi 39120

Landscape Gardening by James Underwood Crockett, illustrated by Allianora Rosse.

Lawns and Ground Covers by James Underwood Crockett, illustrated by Allianora Rosse.

Flowering House Plants by James Underwood Crockett, illustrated by Allianora Rosse.

Three more books have been issued in the excellent Time-Life series, all of the same pattern of excellence as the

volumes previously reviewed. They are well-written, thorough in their coverage of the subjects with excellent photographs—not the least of which are used as covers for the books.

The occasional historical glimpses are an interesting feature. For instance, **Flowering House Plants** has an article on "Notables who shared their names with Plants" (such as L. A. de Bougainville and Joel Robert Poinsett). **Landscape Gardening** puts this

craft in historical perspective with a chapter on "A Legacy from Europe's Gardens." There are also tidbits of unusual interest scattered throughout the text in the margins, often with drawings.

The volume on house plants is particularly welcome for Florida growers because it deals with plants we can grow here. It has a section on orchids

continued page 32

**Registration Blank – Deep South Regional Convention
THUNDERBIRD MOTOR HOTEL, JACKSONVILLE, FLORIDA
March 8 - 9 - 10, 1972**

Please Check:

National Officer _____ Regional Chairman _____ Alternate _____
 National Chairman _____ State President _____ Husband _____
 National Life Member _____ Garden Club Member _____ Guest _____
 Regional Officer _____ Delegate _____

Registration fee full time \$ 5.00 _____
 Registration fee per day \$3.00 _____
 Registration fee for Husband \$1.00 _____

WEDNESDAY, MARCH 8

Workshop EIP "Preserving our Heritage for Bright Horizons" _____
 Reception—Honoring Mrs. Maxwell W. Steel, National Council President. _____
 No fee but check if planning to attend. _____

THURSDAY, MARCH 9

Tour Historic St. Augustine—Restoration Area _____
 Luncheon—Tea—Garden Clubs of St. Augustine \$12.50 _____
 Banquet and Program, Presentation of Deep South Awards \$ 7.50 _____

FRIDAY, MARCH 10

Brunch—Including Complimentary State Flower Show Ticket \$ 5.50 _____

PACKAGE PLANT BEFORE FEBRUARY 25 \$30.50

PACKAGE PLAN AFTER FEBRUARY 25 \$32.50

Special Note: Florida Garden Club Members wishing to attend the Friday half-day program ONLY may register by sending \$1.50 half-day registration fee and price of Brunch. This will also include morning business session, if desired.

Name _____

Address _____

City _____ State _____ Zip _____

Garden Club _____

Amount enclosed with registration blank

MAKE CHECKS PAYABLE TO DEEP SOUTH REGIONAL CONVENTION

Mail check and registration blank to: Mrs. W. H. Eason
 2468 Saragossa Avenue
 Jacksonville, Fla. 32217

PLEASE MAKE ROOM RESERVATION DIRECTLY TO:

Thunderbird Motor Hotel, P. O. Box 8768, Arlington-Jacksonville, Fla. 32211

IN JACKSONVILLE IT'S...

The T-BIRD

THAT SAYS IT ALL!

- TERRACE ROOM
- KING'S INN
- ZODIAC ROOM
- WONDERFALL LOUNGE
- LITTLE PUB

SHOWPLACE OF THE SOUTH

Thunderbird

5865 Arlington Expressway Phone: 724-3410

Deep South Regional Convention

The members of the garden clubs in Florida were honored to have you as guests of the National Convention in Miami and it is with great anticipation that we look forward to greeting you again in our state when we meet for the **Deep South Regional Convention** in Jacksonville on March 8, 9, and 10, 1972.

The theme will be "**FLORIDA'S HERITAGE.**" Many exciting and interesting events are planned. A tour to historic St. Augustine including a luncheon and a tea will be one of the highlights. An outstanding speaker will give the story of our heritage during the banquet with a Spanish theme.

The frosting on the cake will be your opportunity to attend the opening of our state flower show where you will see outstanding arrangements as well as the lush tropical horticulture of Florida. This will be exhibited in the Jacksonville Garden Center, the home of the largest garden club of the world.

Plan now to attend, a warm welcome awaits you.



MRS. ANDREW A. GURKE
PRESIDENT
FLORIDA FEDERATION
OF GARDEN CLUBS



MRS. LEWIS EASTERLY
DIRECTOR, DEEP SOUTH REGION

I am looking forward with much pleasure to seeing many of the Florida Garden Club members in Jacksonville in March at our Deep South Convention.

The theme of the Convention "Florida's Heritage" gives promise of a most interesting program, and the plans made by the Convention Committee and your President are exciting.

May I anticipate seeing you March 8, 9, 10, 1972 in Jacksonville?



MRS. STEELE, President, National
Council of State Garden Clubs, Inc.



MRS. SAM G. VERCOE (ABBY)

We, the Members of the Florida Federation of Garden Clubs are pleased and proud that you have accepted our invitation to hold the 1972 Deep South Region Convention in Florida. Many things have been planned for your choice—all offering relaxation and enjoyments. Husbands attending will have a personal selection of activities, including visiting the largest Aircraft Carrier Base in the world, Mayport Naval Station. See

Jacksonville—"The Bold New City." Tour quaint, tranquil and compelling St. Augustine—our Oldest City—where you may bask in history and tradition. Please plan to come and enjoy "Regional" with your Florida Friends.

Mrs. Sam G. Vercoe (Abby)
1972 Deep South Regional
Convention Chairman

To our loving husbands—WELCOME!

We promise you a program of fun and relaxation. Three of our most cooperative husbands have a "to do" or "not to do" schedule for your pleasure. This includes a bus tour to St. Augustine (with the ladies), a tour of Mayport Naval Station and golf at the much-talked of Ponte Vedra Golf Club (for the more energetic). So come on fellows! What would a Convention be without you. Your jolly good hosts are Messers Sam G. Vercoe, Andrew A. Gurke and Edward F. Smithers.

HURRY! We're all waiting for you!

DISTRICTS

ple and organizations is only the beginning.

Until or unless we work together as a nation and as a world toward our own preservation and that of the creatures around us, the efforts of those now starting will be little noticed.

District XI was invited for the second consecutive year by the "Beaux Arts Society" to participate in the "Promenade of the Americas" this year's theme for their annual extravaganza. Invitations are extended to artists throughout Florida, consequently there are a wide variety of exhibits. Also business firms, local entertainers and other organizations participate.

"The Artistry of Gardening" was

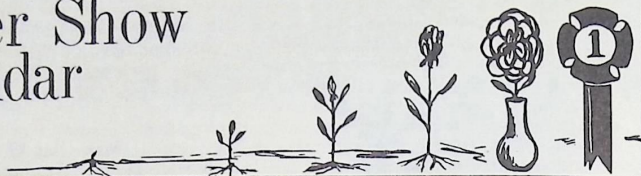


expressed through: horticulture, artistic arrangements, table settings, web of life and a special exhibit by Junior Gardeners (TFGCFL) and a craft exhibit (pine needle weaving).

The floral exhibits division was chairmanned by Mrs. Morris C. Tucker and Mrs. O. Edgar Williams, as they are affiliated with both (Moringa Circle TFGCFL) organizations. Mrs. Wm. Knox and Mrs. C. L. Schandelmayer

continued page 30

Flower Show Calendar



MRS. GLENN PORTER

1906 DeWitt St., Panama City 32401

- January 15-16**—Twenty-fourth Camellia Show, Federal Savings and Loan Association, Tallahassee Garden Club and Men's Camellia, Tallahassee.
- January 22-23**—Camellia Flower Show, Agricultural Center Pioneer Garden Club, Ocala.
- February 19-20**—"Love Is . . . A Garden" Glen F. Bates Garden Center, Federated Garden Circles of Fort Lauderdale.
- February 25-26**—"Reign of the Flowers," Pompano Fashion Square, Pompano Beach Garden Club, Inc.
- February 26-27**—"This Land is My Land," Gulf Beach Garden Center, Gulf Beach Garden Club.
- February 26-27**—"Today's Living" Naples Garden Club, Wellington Hall Interiors, Gulf Shore Square.
- March 3-5**—"Key West Art and Flowers," Key West Garden Center.
- March 6-7**—Flower Flair International, Belleview Biltmore Hotel, Belleair, Clearwater.
- March 18-19**—"Up and Away," Municipal Auditorium, Sarasota Garden Club.
- March 20-25**—"This Good Earth," Exposition Park, Lake County Fair and Flower Show, Eustis.
- March 24-26**—"Beauty Unlimited," Metropolitan Miami Flower Show, Tropical Park Race Track, Miami.
- March 25**—"House Beautiful," Placement Show, Home of Mr. & Mrs. R. E. Bateman, Hillsboro Beach, Seagrape Garden Club, Pompano Beach.
- March 25**—"House and Garden Tour," Naples Garden Club.
- April 8-9**—"I Love a Parade," Bartow Civic Center, Bartow Garden Club.
- April 14**—"Speak to Us of Beauty," First Methodist Church, Chipley Garden Club.
- April 19-20**—"In His Hands," Clearwater Garden Center, Clearwater Garden Club.
- April 20-21**—"Over the Garden Wall," Trinity Methodist Church, Lake Placid Garden Club, Lighthouse Point.
- April 20-21**—Spring Flower Show, Hollywood Garden Center, Hollywood Garden Club.
- April 22-23**—"Flowers in Fantasy Land," Indian Harbour Beach Recreation Center, IN-HAR-BEE Garden Club.
- April 22-23**—Spring Flower Show, Agriculture Center, Pioneer Garden Club, Ocala.
- May 6**—Junior Flower Show, Glenn T. Bates Garden Center, Birch State Park, Federated Garden Circles of Fort Lauderdale.

REGISTRATION BLANK

Florida Council Flower Show Judges ANNUAL MEETING

Thunderbird Motel, Jacksonville, Florida - March 10, 1972

Friday - 5:30 P.M. - Dinner (Reg. incl.) \$7.00

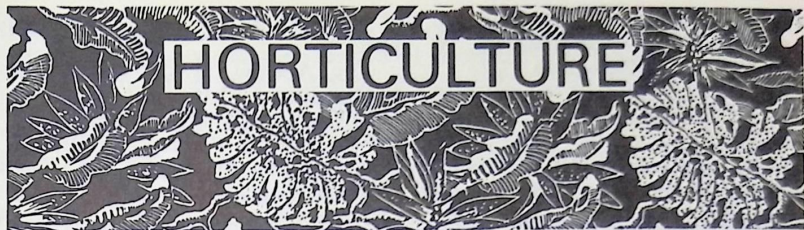
NAME _____

DISTRICT _____

ADDRESS _____

Make checks payable to: Dist. 4 FCFSJ

Mrs. Grady Holbert, 378 Plaza, Atlantic Beach, Fla. 32233



Anthuriums

Surely the most exotic of all tropical plant families is the anthurium. Florida is one of the favored places outside the tropics where these beautiful plants may be grown outdoors. They do especially well in south Florida because they like our warm humid air. Even so they are very tender and one would be advised to provide shelter during cold spells if the temperature falls below 55°. In northern Florida they should be grown inside during the winter months. Nevertheless, even with this necessary caution, anthuriums should be more widely grown for their spectacular and unusual beauty.

Anthuriums, from the Greek meaning tail-flower, are tropical members of the genus Araceae. They are closely related to the Alocasias, the spathiphyllums and the philodendrons, all aroids. Particularly when the plants are not in flower, identification is sometimes difficult. An anthurium can always be identified by its geniculate or bent stem.

There are two major types of anthurium—those grown principally for their flower and those grown for their exotic foliage. There are numerous varieties in each category and these are constantly being increased by cross-breeding.

The flowering type of anthurium is characterized by a most unusual and dramatic flower or rather a very colorful, shiny flattened bract. The true flowers are tiny and are massed on the central spike which obtrudes from the

bract. These plants have been extensively hybridized resulting in a wide color range of whites, oranges, pinks in all shades, and reds. Three of the commonly grown flowering varieties are: *A. Scherzerianum*, *A. Andreanum*, and *A. Carneum*. A well-grown plant, properly cared for, once it reaches maturity, should be continually in flower.

The foliage anthuriums are, if anything, more spectacular. Their sometimes shiny, sometimes velvety surfaces are characteristically lined with a light veined pattern which gives them a distinctive unforgettable elegance. The leaves are heart-shaped or elongated but some are palmately compound.

Anthuriums do best in mild temperatures of not less than 60° to 65° at night but will tolerate a range of 40° to 100°. They like high shade or filtered sunlight. Soil should be highly organic, well-drained and rich, such as a mixture of sphagnum, tree fern, and rotted manure or possibly a mixture of fibrous loam and peat moss.

Anthuriums must put forth thick aerial roots which should be kept covered or they will harden and be of little use to the plant. As the growing point rises above the ground this lower stem should be covered with damp sphagnum moss. Eventually the top of the plant may need to be cut off and re-rooted. The old plant may then set out new growth also. Seeds and offshoots are other methods of propagation.

Some of the more interesting foliage

age varieties are A. Chantinii, A. Crystallinum, A. Warocqueanum, A. Scandens, and A. Pictomayo.

The foliage plants in general have inconspicuous and not very attractive flowers. Some of the larger strap-leaved anthuriums such as A. Hugeli make good specimen plants for the landscape in the southern part of the state. They will withstand a short drop

in temperature but not a protracted one.

The Araceae in general, though widely grown, have not been sufficiently researched or written about. We are in need of more definitive information and more widespread knowledge, especially about those lovely exotic plants, the anthuriums.

Mrs. E. R. Hunter

"PATE"

HELP A TEACHER - HELP A CHILD - HELP OUR WORLD

Through your National Council Project **PEOPLE AND THEIR ENVIRONMENT** "PATE."

WHAT: Eight Teachers' Curriculum Guides to Conservation Education

WHY: To provide school children with understanding and appreciation of our World.

WHO: Garden Clubs with aid from friends, neighbors, civic and business organizations

WHEN: NOW! - TODAY!

wonderful news from Gro-Tone Super Plant Food

new!
PELLETIZED

Gro-Tone Pelletized Weed & Feed combines a premium quality, long-lasting plant food containing organics, chelated iron and vital elements with an amazing weed killer for St. Augustine, Zoysia and Centipede lawns.



Florida's most famous premium formula now fortified with Organics, Chelated Iron and Vital Elements!

new!
PELLETIZED



Gro-Tone Pelletized Lightweight Lawn Special has the famous, proven, premium Gro-Tone formula in concentrated easy-to-use form. Only 25-pounds covers up to 5,000 sq. ft. Contains organics, chelated iron and vital elements.



Use these other Gro-Tone® "Prescription Foods" Camellia-Azalea-Gardenia Special, Rose Special, Citrus Special, Palm & Ixora Special... And these... Gro-Tone Soluble, Bed Mix, Floraganic®, BLOOMaster®. • TM

all have Special Formulas for Florida soil / QUALITY BY WILSON & TOOMER

HOW: Familiarize yourself and your club members with the Series of books, using the advance literature sent to all Presidents. Invest in a set of books—you will never get more for your money! Eight books will cost your club \$27.20, and represent your "show case" giving you an open door to school personnel. Have all club members involved.

ORDER BOOKS FROM: J. G. FERGUSON PUBLISHING COMPANY, No. 6 N. Michigan Avenue, Chicago, Illinois 60602

FLORIDA is leading in the number of volumes placed in schools by Garden Clubs and is closely followed by Texas.

DON'T underestimate **YOUTH POWER**—educate them in Conservation—they will teach the adults. This is your opportunity to **HELP A TEACHER - HELP A CHILD - HELP OUR WORLD!**

If you're having any problems, please let us know and we'll do our best to help you— Help A Teacher - Help A Child - Help Our World.

Miss Elizabeth Mason
Conservation Chairman, NCSGC
534 Candler Park Drive
Atlanta, Georgia 30307

TIMBER

the nation to move ahead instead of backward.

This kind of philosophy is the only kind that can meet both the people's needs and the conservation needs."
—New York Times.

new, fine-quality Hughes Blu-Green Plant Foods now available in southeast Florida

Hughes **BLU-GREEN PELLETS** are a quality formula of primary and secondary foods, fortified with Chelated Iron and Vital Elements. Clean, long lasting Here's the easiest way to have a beautiful, healthy lawn and flowers, trees, shrubs and vegetables, too!



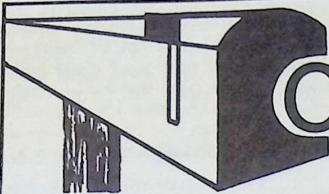
Hughes **BLU-GREEN Pelletized Weed & Feed** contains a complete, quality plant food with Organics, Chelated Iron and Vital Elements, plus control of most weed pests in St. Augustine Zoysia and Centipede lawns.



Hughes **BLU-GREEN Pelletized Lightweight Lawn Special** is a premium plant food containing Organics, Chelated Iron and Vital Elements in a concentrated lightweight form for easier handling. Just 25-pounds covers up to 5,000 sq. ft.

Take advantage of these other fine Hughes Plant Foods **BLU-GREEN Bloom Special**, **BLU-GREEN Fruit Tree Special**, **BLU-GREEN Palm Special**, **BLU GREEN Rose Special**, **Blu-Organic**, **FVH Gardenia Special**.

all have special formulas for Southeast Florida soil, by the makers of Gro-tone Super Plant Food.



Circulation

"It seems to me I've heard this song before." You're right, you have and no doubt will again. Over 500 Gardeners were returned from the September-October issue, and the figures are still climbing for the November-December issuance. Needless to say, most of this could be eliminated.

Common sense is the by-word in reaching our circulation aims, i.e., EACH garden club member receiving the Florida Gardener! These are the musts:

1. New members reported regularly
2. Deceased or resigned members reported immediately
3. Copy must be typed or printed and double spaced
4. Club and Zip Code included
5. Twenty-five cents must accompany all address changes and reported 6 weeks prior to move if possible. Old address is absolutely necessary. **SECOND CLASS MAIL IS NOT FORWARDABLE AND RETURNED GARDENERS ARE COSTLY TO YOU.**
6. Please help expedite our work by mailing to: The Florida Gardener - Circulation Mgr. P. O. Box 23577 Fort Lauderdale, Fla. 33307

Districts I and VI lead the state in the reporting of their annual membership lists. It's not too late!

A special thank you to Mrs. Jess Youngkin for her efforts in behalf of circulation in the Belleair Garden Club, Inc. Voluntary action is refreshing!

Circulation depends upon you—your consistency, your accuracy and adherence to the requirements.

Yours for spreading garden clubs' news and views through increased circulation.

Dodie Blaschik, Circulation Manager

P.S. Mrs. John Glover is no longer serving in the Circulation Department. Please up-date your info.

and their re-potting and an illustrated section "What your House Plant is Trying to Tell You," which explains the conditions behind symptoms such as leaf browning, stunting, bud dropping, etc.

A large part of each volume is a listing of plants (or trees or ground covers) pertinent to the subject covered. These are charmingly illustrated with colorful drawings by Allianora Rosse. Altogether, the series lives up

to the promise of the first two volumes and would be a welcome addition to any library either as picture-books or as informative texts.

Mrs. E. R. Hunter

HYPONEX[®] PLANT FOOD
Grows better plants, indoors or outdoors.
Clean & soluble. 10 oz.—\$1.29. Makes 60 gals.
Free catalog, HYPONEX, COPLEY, OH. 44321

14TH ANNUAL FLORIDA STATE FLOWER SHOW

“BOLDLY WE SEARCH”

Garden Center

Jacksonville, Florida

presented by

THE FLORIDA FEDERATION OF GARDEN CLUBS, INC.

and

THE GARDEN CLUB OF JACKSONVILLE

Member of National Council of State Garden Clubs, Inc.

March 10 - 3-7 P.M. / March 11 - 10-6 P.M.

March 12 - 12-6 P.M.

General Chairman

Mrs. D. O. Foshee, Sr.

9744 Scott Mill Road

Jacksonville, Florida 32217

Phone: 904/733-2900

Consultant and Advisor

Mrs. J. Lynwood Price

3835 Ponce de Leon Avenue

Jacksonville 32217

Phone: 904/733-1327

Schedule Chairman—Div. I

Mrs. A. W. Simpson

1552 May Street

Jacksonville 32204

Phone: 904/355-6960

Co-Ordinator

Mrs. C. W. Parmalee

7041 Salamanca Avenue

Jacksonville 32217

Phone: 904/737-2938

Schedule Chairman—Div. II

Mrs. Joseph W. Blake

1296 Avondale Avenue

Jacksonville 32205

Phone: 904/388-1394

Treasurer

Miss Vesta Sanders

1264 Eutaw Place

Jacksonville 32207

Phone: 904/398-1073

Staging Co-Ordinator

Mrs. Hugh J. Grainger, Jr.

7004 Andalusia Avenue

Jacksonville 32217

Phone: 904/733-0290

RULES FOR DIVISION I — HORTICULTURE

1. All classes are open to members of The Florida Federation of Garden Clubs, Inc. and to any amateur gardener.
2. Plants must have been in the possession of, and grown by the exhibitor for at least three months prior to the show. Cut specimens must have been grown by the exhibitor.
3. In a given section or class, exhibitor may enter more than one variety in a genus but not more than one of the same variety or color.
4. Any other meritorious genus or variety not listed may be added under its proper section.
5. Correct labeling with botanical and common name required.
6. Plants should be show-worthy, well groomed (no oiling), in clean pots. Pot size shall not exceed 12 inches except in sections where otherwise specified.
7. Cut specimens shall not exceed 24" in total length except in sections where otherwise specified.
8. Advance registration is requested for all potted plants. Registration should state class

- and size of pot. Registration: Mrs. A. W. Simpson, 1552 May St., Jacksonville 32204.
9. All potted plants from Jacksonville and adjoining areas, if possible must be entered on **March 9, 4-8 P.M.** Potted plants from other areas and all cut specimens will be entered between **7-11 A.M., Friday March 10.** Entries will be from the front entrance of the **Woman's Club of Jacksonville building on Riverside Avenue and Post Street.**
 10. Plants may be removed after **6 P.M. March 12,** and **must** be removed by **12 Noon, March 13.** Exhibitor must present stub to claim plant.

"BOLDLY WE SEARCH"

Tentative Schedule

DIVISION I - HORTICULTURE

CUT GARDEN FLOWERS

"We Search for The Bold and The Beautiful"

SECTION A.

"SEARCH FOR BEAUTY"

Annuals, Biennials and Perennials (3 stems unless otherwise stated)

Class:

1. Lobularia-(Alyssum)
2. Anthirrhium (Snapdragon (1 stem))
3. Calendula
4. Campanula (Canterbury Bells)
5. Centaurea (Cornflower)
6. Chrysanthemum
7. Cynoglossum (Chinese Forget-Me-Not)
8. Delphinium
9. Dianthus
 - a) Carnation (1 stem)
 - b) Pinks
 - c) Sweet William
10. Gypsophila (Baby's Breath)
11. Iberis (Candy Tuft)
12. Lathyrus (Sweet Pea)
13. Mathiola (Stock-1 stem)
14. Molucella (Bells of Ireland-1 stem)
15. Musaceae (Banana Family)
 - a) Heliconia-1 stem
 - b) Strelitzia (Bird of Paradise-1 stem)
16. Petunia
 - a) Single
 - b) Double
 - c) Ruffled
 - d) Dwarf
17. Phlox
 - a) Annual
 - b) Perennial
18. Tropaeolum (Nasturium)
19. Violaceae (Violet Family)
 - a) Pansy
 - b) Violet
- 20 ANY OTHER MERITORIOUS ENTRY

SECTION B.

"SEARCH FOR THE BOLD"

Bulbs, Corms, Rhizomes and Tubers (1 stem unless other stated)

Class:

21. Amaryllidaceae (Amaryllis)
 - a) Salver Shaped
 - b) Dutch
 - c) OTHERS
22. Zantedeschia (Calla)
23. Clivia
24. Gladiolus
25. Gloriosa
26. Iris
 - a) Dutch
 - b) Louisiana
 - c) Native
 - d) OTHERS
27. Leucojum (Snow Flake) 3 stems
28. Ranunculaceae
 - a) Anemone
 - b) Ranunculus
29. Tulipa (Tulip)
30. ANY OTHER MERITORIOUS ENTRY

SECTION C.

"SEEKING BEAUTY"

Decorative Cut Foliage of Plants, Shrubs, Vines and Trees (1 specimen not to exceed 24" in length)

Class:

31. Green Foliage
 - a) Aspidistra
 - b) Sansevieria
 - c) Palmaceae (Palms)
 - d) Philodendron
 - e) Ivy
 - f) Pittosporum
 - g) ANY OTHER MERITORIOUS ENTRY

32. Variegated Foliage
 - a) Coleus
 - b) Begonia
 - c) Ivy
 - d) Hoya (Wax Vine)
 - e) Philodendron
 - f) Pittosporum
 - g) ANY OTHER MERITORIOUS ENTRY

SECTION D

"INTREPID SEARCH"

Flowering or Fruiting Shrubs, Trees and Vines—must be in fruit or flower—stem not to exceed 24" unless stated.
Class:

33. SHRUBS
 - a) Camellias (2" stem with foliage attached)
 - 1) Treated Blooms
 - 2) Untreated Blooms
 - b) Myrsinaceae (Ardisia)
 - c) Nandina
 - d) Rhododendron Azalea
 - 1) Indica
 - 2) Kurume
 - 3) Pericat
 - 4) OTHERS
 - e) Pyracantha
 - f) Quince
 - g) Spiraea
 - 1) Single
 - 2) Double
 - h) ANY OTHER MERITORIOUS ENTRY
34. TREES
 - a) Crab Apple
 - b) Cercis (Rebud)
 - c) Cornus Florida (Dogwood)
 - d) ANY OTHER MERITORIOUS ENTRY
35. VINES
 - a) Bougainvillea
 - b) Lonicera (Honeysuckle)
 - c) Trachelospermum Jasminoides (Confederate Jasmine)
 - d) ANY OTHER MERITORIOUS ENTRY

SECTION E.

"DARING FOR A DAY"

Hemerocallis (Day-Lilies)

Class:

36. Named Variety on scape
37. Seedling on scape
38. Individual Bloom (New Variety only) may not be over five (5) years old

SECTION F.

"WE SEARCH FOR THE DELICATE BEAUTY"

ORCHIDACEAE (Orchids)

Class:

39. Cattleya Alliance
40. Dendrobium
41. Epidendrum
42. Phalaenopsis Type
43. ANY OTHER MERITORIOUS ENTRY

SECTION G.

"SEEKING THE GARDEN QUEEN"

ROSES (subclassed by color)

Class:

44. Hybrid Tea
45. Floribunda and Polyantha
46. Grandiflora
47. Miniatures
48. Climbers (1 stem or lateral)
49. Old Garden Rose (1 naturally grown stem)
50. ANY OTHER MERITORIOUS ENTRY

SECTION H.

"HUNT FOR NATURE'S BEST"

WILD FLOWERS—must be named by exhibitor

Class:

51. One stem, spike or rosette with foliage
52. Plants on Conservation List—must be grown by exhibitor

CONTAINER GROWN PLANTS

"We dare with tender loving care"

SECTION I.

"THE SEARCH FOR PERFECTION"

Class:

53. BALSAMINACEAE
 - a) Impatiens (Sultana)
 - b) OTHERS
54. BEGONIACEAE (Begonia)
 - a) Fibrous rooted
 - b) Rhizomatous
 - c) Rex
 - d) Tall Cane
 - e) Semperflorens
 - f) OTHERS
55. BROMELIACEAE (Bromeliads)
 - a) Billbergia
 - b) Bromelia
 - c) Cryptanthus
 - d) Dyckia
 - e) Neoregelia

- f) Vriesia
- g) OTHERS
- 56. COMMELINACEAE
 - a) Zebrina
 - b) Tradescantia (Wandering Jew)
 - c) ANY OTHER MERITORIOUS ENTRY
- 57. EUPHORBIACEAE (subclass according to variety)
 - a) Acalypha (Copper Leaf)
 - b) Codiaeum (Croton)
 - c) Euphorbia (Crown of Thorns)
 - d) ANY OTHER MERITORIOUS ENTRY
- 58. GERANIACEAE—Pelargonium (Geranium) (must be in bloom—may be subclassed)
 - a) Single
 - b) Double
 - c) Ivy Type
 - d) Scented Leaf (need not be in bloom)
 - e) OTHERS
- 59. GESNERIACEAE (Gesneriads)
 - a) Achimenes
 - b) Columnea
 - c) Episcia
 - d) Gloxinia
 - e) Saintpaulia (African Violet—Single Crown only)
 - 1) Single Bloom
 - 2) Double Bloom
 - f) ANY OTHER MERITORIOUS ENTRY
- 60. LIBIATE
 - a) Coleus
 - b) OTHERS
- 61. LILIACEAE
 - a) Aloe
 - b) Beaucarnea Recurvata (Pony Tail)
 - c) Chlorophytum (Airplane Plant)
 - d) Dracaena
 - e) Haworthia
 - f) Sansevieria
 - g) ANY OTHER MERITORIOUS ENTRY
- 62. MARANTACEAE (Maranta)
 - a) Calathea
 - b) Maranta
 - c) OTHERS
- 63. PIPERACEAE (subclass according to variety)
 - a) Peperomia
 - b) OTHERS

SECTION J

"SEARCH FOR EASY CARE"
 CACTACEAE (Cacti) and CRASSU-

LACEAE (Succulents)

- Class:
- 64. Cacti
 - 65. Succulents
 - 66. Cereus
 - 67. Zygocactus (Easter, etc.) must be in bloom
 - 68. Kalanchoe
 - 69. Echeveria
 - 70. Sedum
 - 71. ANY OTHER MERITORIOUS ENTRY

SECTION K.

"THE BRAVE AND THE BEAUTIFUL"

FELICES (Ferns)—no limit to six.

Class:

- 72. Potted Ferns (subclassified according to Variety)
- 73. Hanging Ferns (subclassified according to Variety)

SECTION L.

"SEEKING DELICATE BEAUTY"

ORCHIDACEAE (Orchids)

Class:

- 74. Cattleya Alliance
- 75. Dendrobium
- 76. Epidendrum
- 77. Jewel Orchid (need not be in bloom)
- 78. Phalaenopsis Type
- 79. ANY OTHER MERITORIOUS ENTRY

SECTION M.

"LOOKING FOR SMALL CHARMS"
 MINIATURE PLANTS

Class:

- 80. Blooming Plants (must be in bloom)
- 81. Foliage Plants (grown for foliage only)
- 82. Felices (Ferns)
- 83. Cacti and Succulents
- 84. ANY OTHER MERITORIOUS ENTRY

SECTION N.

"MAN SEEKS THE BEST"

FRUITS AND VEGETABLES (exhibited on plates furnished by committee.

Class:

- 85. Specimen Fruit (Oranges, Grapefruit, etc.)
- 3 specimens of same variety on stems with foliage attached.
- 86. Cluster Fruit (Kumquats, Cala-

mondins, Loquats, etc.

- 1 nice spray
87. Vegetables—(Beans—5) (Carrots—3) (Onions—3) (Turnips—3) Cabbage or Kale—1 head may include flowering cabbage or kale

SECTION O.

"THE SEARCH GOES ON AND ON" PLANT COLLECTIONS

Class:

88. Flowering plants—minimum of five (5) of same genus
89. Plants grown for Foliage—minimum of five (5) of same genus.

SECTION P.

"WE SEEK TO CREATE BEAUTY" SPECIAL CONTAINER GROWN PLANTS

Class:

90. Dish Gardens (must have a message)
91. Planters
a) One Variety
b) Mixed Varieties
92. Bonsai
93. Terrariums
94. Bubble Gardens
95. OTHERS

SECTION Q.

"SEEKING THE PERFECT"

HANGING CONTAINERS—(not including Ferns)

Class:

96. Containers in bloom
a) One Variety
b) Mixed Varieties
97. Grown for foliage only
a) One Variety
b) Mixed Varieties

SECTION R.

"SEARCH FOR THE SHOW-OFFS"

PATIO PLANTS—Must be 24 inches or over in height

Class:

98. Plants in bloom or berry
99. Plants grown for foliage only.

SECTION S.

"SEARCH FOR THE AWARD"

This section is eligible for the

ARBOREAL AWARD

In order to promote the recognition of beauty in Horticulture specimens, their usefulness in landscape design and flower arrangement, and to encourage the hybridization or improvement of existing varieties, the following classes are eligible for the ARBOREAL AWARD. The winning exhibit must score 95 or above.

Class:

1. Broad leaved evergreen
4 entries
2. Narrow leaved evergreens
4 entries
3. Coniferae (Junipers, Cedars, etc.)
4 entries
4. Fruiting or Flowering Branches
4 entries

(Requirements—Entries in these four classes must be at least 18" in length and not exceed 30" in length. May be branch, limb, etc. and must be groomed for entry. Staging committee will furnish containers for staging.

Consultant for the above Section:

Mrs. Charles E. Logan
656 Brookmount Ave., E.
Jacksonville 32211
Phone: 904/724-6076

DIVISION II — ARTISTIC HIGH SCHOOL GARDENERS

Consultant:

Mrs. Rudy Kratz
9655 Evans Road
Jacksonville, Fla. 32208
Phone: 904/764-4095

Rules for HSG Classes

1. All classes are open to members of registered HSG Units, Grades 10 through 12.
2. General rules of the show and rules for Division II shall apply. Please read carefully.
3. Entry card shall have exhibitor's name, grade, unit, school and city.

SECTION J. FLORIDA MONTAGE

We seek the talented leaders of tomorrow.

(All niches painted a neutral color, slant side, 30" high x 24" wide x 17½" deep)

Accessories allowed in all classes.

Class 1. "DEEP MYSTERY"—Caverns

4 entries

A design using fresh and/or dried plant material interpreting the title. To be staged in a niche.

- Eligible for CREATIVITY AWARD II.
- Class 2. **"BEAUTY FROM THE LAND"** 4 entries
 A design of fresh and/or dried plant materials may include wild flowers and seedpods. Staged in a niche. Eligible for CREATIVITY AWARD II.
- Class 3. **"SEARCH FOR LOVE"** 4 entries
 A design of fresh and/or dried plant materials to be staged in a niche. Eligible for the CREATIVITY AWARD II.

SCALE OF POINTS

Design	30
Interpretation	20
Personal Expression	20
Distinction	20
Color	10
	<hr/>
	100

INTERMEDIATE GARDENERS – DIVISION II

Consultant
 Mrs. Rudy Kratz
 9655 Evans Road
 Jacksonville, Fla. 32208
 Phone: 904/764-4095

Rules for Intermediate Gardeners

1. All classes open to all Intermediate Gardeners, Grades 7 through 9, but must be affiliated with Florida Federation of Garden Clubs, Inc.
2. General rules of the show and rules for Division II shall apply to this section, except that accessories, backgrounds and bases may be used in all classes.
3. Entry card shall have exhibitor's name, grade, club, school and city.

SECTION K. THIS IS MY STATE – Youth seeks to know.

- Class 1. **"QUIET MEDITATIONS"** (Bok Singing Tower) 4 entries
 A design of all fresh plant material to be staged in a niche 30" high x 24" wide x 17½" deep slant-side and painted neutral color.
 Eligible for a Local Award.
- Class 2. **"THE OPEN SEA"** 4 entries
 A design of all dried plant materials indigenous to the sea or the seashore to be staged in a slantside neutral color niche 30" high x 24" wide x 17½" deep.
 Eligible for a Local Award.
- Class 3. **"MY NATIVE LAND"** 4 entries
 An artistic design of natural dried plant materials, may include a minimum of fresh if desired. Staged in neutral color slantside niche 30" high x 24" wide x 17½" deep.
 Eligible for a Local Award.

Scale of Points

Design	30
Interpretation	30
Originality	20
Distinction	20
	<hr/>
	100

JUNIOR GARDENERS – DIVISION II

Rules for Junior Gardeners

1. All classes are open to all junior Gardeners, grades 4 through 6, affiliated with the Florida Federation of Garden Clubs, Inc.
2. General rules of the show and rules for Division II shall apply to the Junior Section, except that accessories may be used in all classes. Backgrounds may be used.
3. Entry card shall have exhibitor's name, grade, club, school and city.

SECTION L. OUR JUNIORS YEARN TO LEARN

Our Juniors see the unusual that Florida has for the searching mind.

Resume of Board Minutes

October 6-7, 1971

Compiled by
MRS. MELVILLE HALL

WINTER PARK

Mrs. Andrew A. Gurke, President called the meeting to order and reported of the presentation for \$14,616.44, representing profits from the 1971 National convention to the National Council of State Garden Clubs in St. Louis.

Approved for the federation to honor Florida's National Council Mrs. Vernon L. Conner, FFGC's immediate past president Mrs. Maurice S. Dillingham, Convention Chairman Mrs. Edwin B. Dean and co-chairman Mrs. E. R. Jordan with engraved stones in the Garden of Givers at the National Council Permanent Home in St. Louis, Mo.

Unanimously endorsed Mrs. Vernon L. Connor as the nominee of first vice president of NCSGC and urged each board member to write the National nominating committee chairman and the two Deep South members in behalf of Mrs. Conner.

Accepted the invitation of District X, Florida Council of Nationally Accredited Flower Show Judges, to hold the 1972 Symposium September 20-22, in the Palm Beaches at the Colonnades Hotel on Singer Island with Mrs. Milo V. Martin, serving by appointment of Mrs. Gurke, as chairman.

Accepted the invitation of the Tampa Federation of Garden Club Circles, Inc., to hold the 1973 Symposium in Tampa.

Accepted the Carlisle Rose Garden Club of Sneads, District II, into federation membership.

Program material and books available from State Headquarters: Sound films 16 mm: (1) "Lassie's Litter Bit," (2) "A Nation of Spoilers," (3) "Community Action for Beauty," and books: "The Madonna Story" and "Rubies and Roses."

Dates and theme for the sixteenth annual Tropical Short Course were announced. See page 16 N/D issue of TFG and additional information page 28 of this issue.

Florida now has 81 Blue Star Memorial Markers, the latest provided by Garden Gate Circle of Bartow Garden Club and it was dedicated June 1.

The bylaws committee will present recommendations at the January board meeting.

Approved Flower Show Schools Course V, St. Petersburg, October 20-22, 1971, Course IV, Jacksonville, October 26-28, 1971, Course V, Key West, November 3-5, 1971, and Course IV, Ft. Lauderdale, January 18-20, 1972.

Slides were shown of the 1971 Junior Nature Camp by Mrs. Dewey R. Villareal, Jr.

A letter of appreciation will be written to Killearn Properties, Inc., Tallahassee for assistance with Series V, Landscape Design Course IV, which 13 students completed.

The Blanche Covington Nature Study Course will be held in O'Leno State Park, April 23-29, 1972. Members are asked to send National Geographic and Audubon magazines for use in decoupage at the event.

Dates were announced for Junior Nature Camp in 1972 at O'Leno State Park, July 23- August 12, with boys' week first and the cost remaining at \$40.

The 28th annual short course will be held at the University of Florida June 20-22, 1972, and the tentative theme is "Flowers Inside and Out."

Important 1972 Events: Deep South Regional Convention and the State Flower Show. See pages 16 and 17 for DSRC and the horticulture,

Junior, Intermediate and High School gardener schedules are in this issue.

Approved a \$1,000 advance for the 1972 FFGC Convention.

ANNOUNCEMENTS: (1) Mrs. Truman Green, Tampa, newest Headquarters patron, (2) \$687.42 the federation's share of net profits on the 1971 FFGC Convention presented by Mrs. Edwin B. Dean, Convention chairman and (3) a check for \$300 was presented to Mrs. Maurice S. Dillingham, from the convention committee and District XII. Mrs. Dillingham gave the \$300 check to the Headquarters and Endowment Fund.

Adopted the auditor's report dated August 4, 1971.

Voted to provide awards for the Florida Foundation for Future Scientists in amounts of \$25, \$20 and \$15 for high school students, \$20, \$15

and \$10 for students in the junior group or a total of \$105 per year, with awards to be limited to fields relating to garden club interests.

Approved FFGC-sponsored Duffy tours, see pages 14 and 15 of this issue.

Mrs. Dewey R. Villareal, Jr., reported on FFGC Junior Nature Camp's design plan which is to be located in Wekiwa State Park.

Date announced for Arbor Day in Florida January 21, 1972. Called attention to Arbor Day Centennial 1972 and the promotion of a commemorative Arbor Day stamp. Have you written your letter? See page 32 N/D issue of TFG.

Mrs. Gurke announced Florida has been selected to develop a pilot conference on youth (Conservation chairman NCSGC Miss Elizabeth Mason). Details forthcoming!!

DISTRICTS



staged the exhibit. Also involved were plant societies (Orchid, Bromeliad, Bonsai), and background plants and gardening accessories were furnished by a nurseryman and a business firm.

The three day event is the largest of its kind in the area and over 38,000 attended. The gardening-floral exhibit provided a "breath of sunshine" for the majority of attenders, and it should be of great educational value.

Class 1. "FUN AND FROLIC"—Silver Springs

4 entries

A design of all fresh plant material to be staged in a niche (neutral color, straightside 27" high x 23" wide by 17" deep). Eligible for JUNIOR ACHIEVEMENT AWARD.

Class 2. "JUBILANT JOY"—Disney World

4 entries

A design of all dried and/or cured plant material (paint permitted). Staged in a straightside neutral color niche 27" high x 23" wide x 17" deep. Eligible for JUNIOR ACHIEVEMENT AWARD.

Class 3. "TENDER LOVING CARE"—Marineland

4 entries

A design of all dried plant material, using driftwood and seashore materials. Staged in niche (neutral color, straightside, 27" high x 23" wide x 17" deep). Eligible for JUNIOR ACHIEVEMENT AWARD.

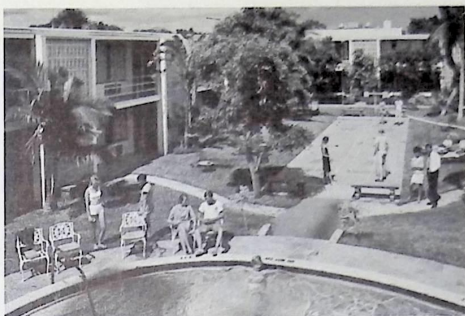
SCALE OF POINTS

Consultant:	Design	35
Mrs. John Nunnery	Interpretation	25
6533 Cooper Lane	Originality	20
Jacksonville, Fla. 32210	Distinction	20
Phone: 904/786-5746		100

SECTION M. DIVISION III - EDUCATIONAL EXHIBITS

"Fearlessly we seek improvements in man's environment, a more beautiful world in which to feel secure:

Consultant: Mrs. John M. Hellmuth 1454 River Road Orange Park, Fla. 32073



YOUR HEADQUARTER HOTEL
WELCOME TO THE SARASOTA MOTOR HOTEL
AND CONVENTION CENTER
SARASOTA, FLORIDA

We invite you to use the coupon below to make your reservations directly with the hotel. Fill out. Detach. Mail. (It's as simple as that.) By the way, early reservations are suggested.

Resident Manager
SARASOTA MOTOR HOTEL
 P.O. BOX 3319
 Sarasota, Florida 33578

Please reserve the following accommodations during the meeting of the Florida Federation of Garden Clubs, Inc., May 2-5, 1972.


NAME _____

ADDRESS _____ **ZIP** _____

Motel		Hotel	
_____ Single	\$13.00	_____ Single	\$11.00
_____ Double	\$15.00	_____ Double	\$13.00
_____ Triple	\$19.00	_____ Triple	\$17.00
_____ Quadruple	\$23.00	_____ Quadruple	\$21.00

Arrival Date _____ A.M. ____ P.M. _____

Departure Date _____



**USE 100%
RECLAIMED
PAPER**

note pads

ECOLOGY PRODUCTS

1252 N.E. 38th Street
Ft. Lauderdale, Fla. 33308

PHONE: 565-4809

Note pads 5½ x 8½ with tree design attractive enough for stationery.
Printed on 100% RECLAIMED PAPER.

ECOLOGY SEA GREEN ECOLOGY SKY BLUE

Price per pad \$1.25. Including postage and handling.

Write for club and organization discounts on quantity orders for resale.

Make checks payable to: ECOLOGY PRODUCTS

NAME _____

ADDRESS _____

CITY _____

STATE _____ ZIP _____

SAVE AT
**WINN
 DIXIE**
 FOOD STORES

THE SMART PLACE TO GO...
 FOR GOOD THINGS TO EAT!

"Schultz-Instant"



7 DROPS to a quart of water
 "starts and feeds" all plants

or send \$1.25 for 2 bottles,
 prepaid to

SCHULTZ COMPANY
 11730 Northline, St. Louis, Mo. 63042

Available at
 your store

"Send for our Fund Raising Offer"



**You CAN Grow Roses
 in Florida
 if they're NELSONS!**

on Rosa fortuniana rootstock (Double-Cherokee)

Nelsons' Florida Roses

Route 1, Box 164 • Apopka, Florida 32703 • Telephone 886-3111
 Member: American Rose Society • Florida Nurserymen & Growers Association

*Dramatize
 Your Garden...*

with a "LIGHT TOUCH"



Accent lighting for plants and shrubberies
 will add new beauty to your garden
 —new pleasure to your gardening. For
 helpful suggestions on garden and patio lighting,
 just visit our nearest office and pick up
 your copy of our free idea booklet on
 "Light for Living, Outdoors."



The Power to Please!

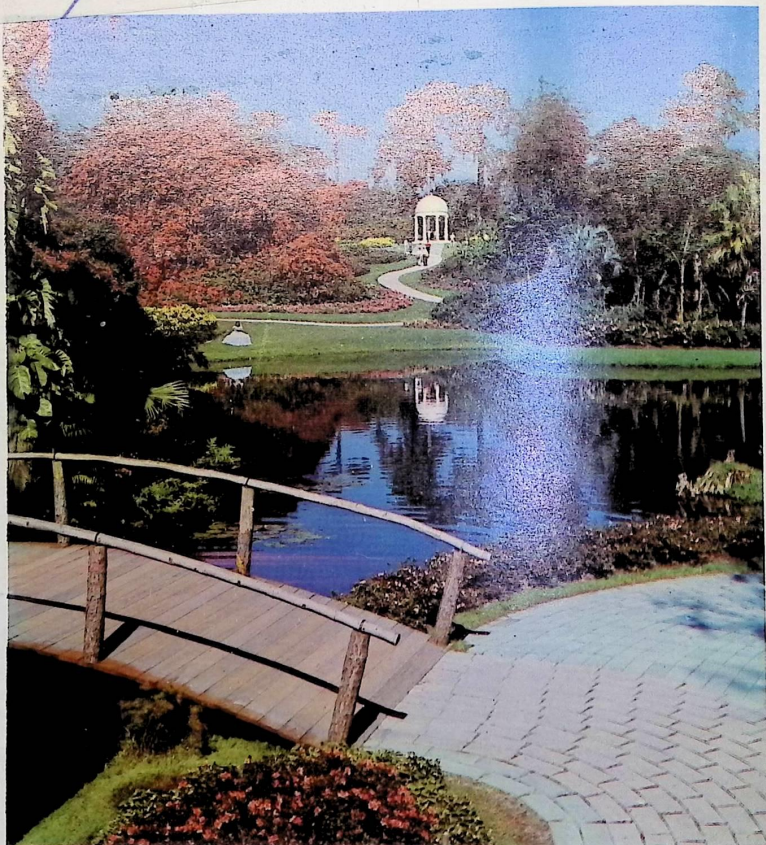
FLORIDA POWER CORPORATION

THE FLORIDA GARDENER P. O. Box 23577 Fort Lauderdale, Florida 33307
RETURN POSTAGE GUARANTEED Postmaster: Please send unclaimed complete copies

+ Form 3579

~~XXXXXXXXXX~~ ~~XXXXXXXXXX~~ ~~XXXXXXXXXX~~
LP

~~XXXXXXXXXX~~ ~~XXXXXXXXXX~~
~~XXXXXXXXXX~~ ~~XXXXXXXXXX~~
~~XXXXXXXXXX~~ ~~XXXXXXXXXX~~



CYPRESS GARDENS, FL.—The enchanting “Big Lagoon” reflects the panoramic beauty of the picturesque Gazebo at Florida’s Cypress Gardens.