

**ELLA P. WOODS  
PATHS OF  
SUNSHINE  
2022 AWARDS**



# \*First Place\*

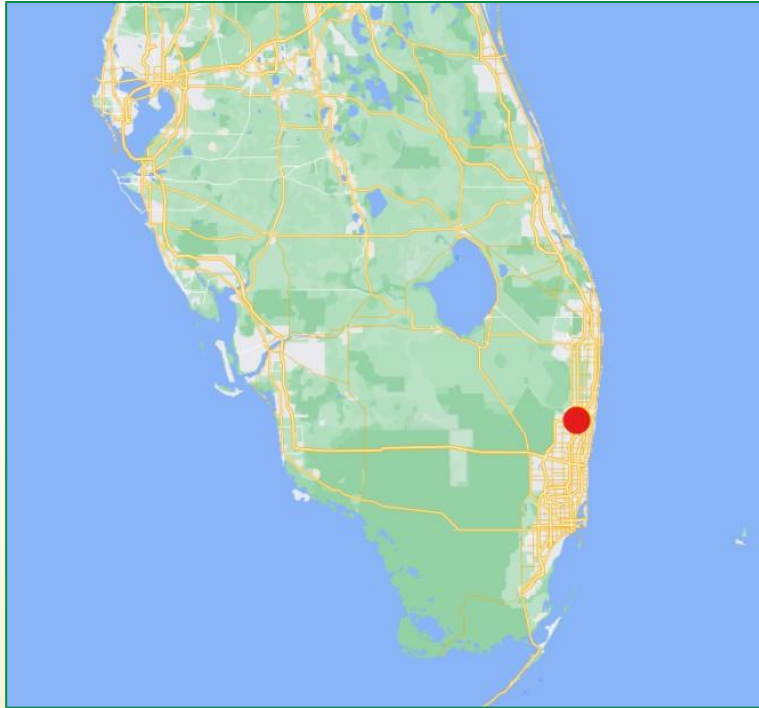
## Turnpike Enterprise – Roadway Maintenance

Nominated by Andrew Seibel, Environmental Specialist Consultant



Preserving natural and native settings along the Sawgrass Expressway

→ Naturally occurring native wildflowers, with royal palms and live oaks that border lakes



Turnpike Mainline and the Sawgrass Expressway (SR-869) Interchange (Exit 71)  
(Broward County)

Left: Location in State Right: Wildflower areas (yellow) and remnant native tree areas (green)



Left: Spectacular display of Leavenworth's Tickseed  
Right: Existing wildflowers augmented with Black-eyed Susan, Goldenmane  
Tickseed, and Drummond Phlox



## Future Goals

- Expand number and size of wildflower plots (currently 8)
- Have wildflower areas completely surround each lake
- Continue use of integrated vegetative management practices to facilitate sustainability of wildflower plots

# **\*Second Place\***

## **FDOT District 2 – Chiefland Maintenance**

Nominated by Larry Porter, District 2 Wildflower Coordinator



**One of the most beautiful stretches of wildflowers in District 2**

- Consistently showy each year due to the continued efforts of Chiefland Maintenance to selectively mow and replant certain areas each fall
- 6.4 miles long
- Native Fleabane mixed in with Goldenmane Tickseed and Drummond Phlox



SR-26, CR-232 to SW 15<sup>th</sup> Court (Gilchrist County)

# **\*Third Place\***

## **District 2 – St. Augustine Maintenance**

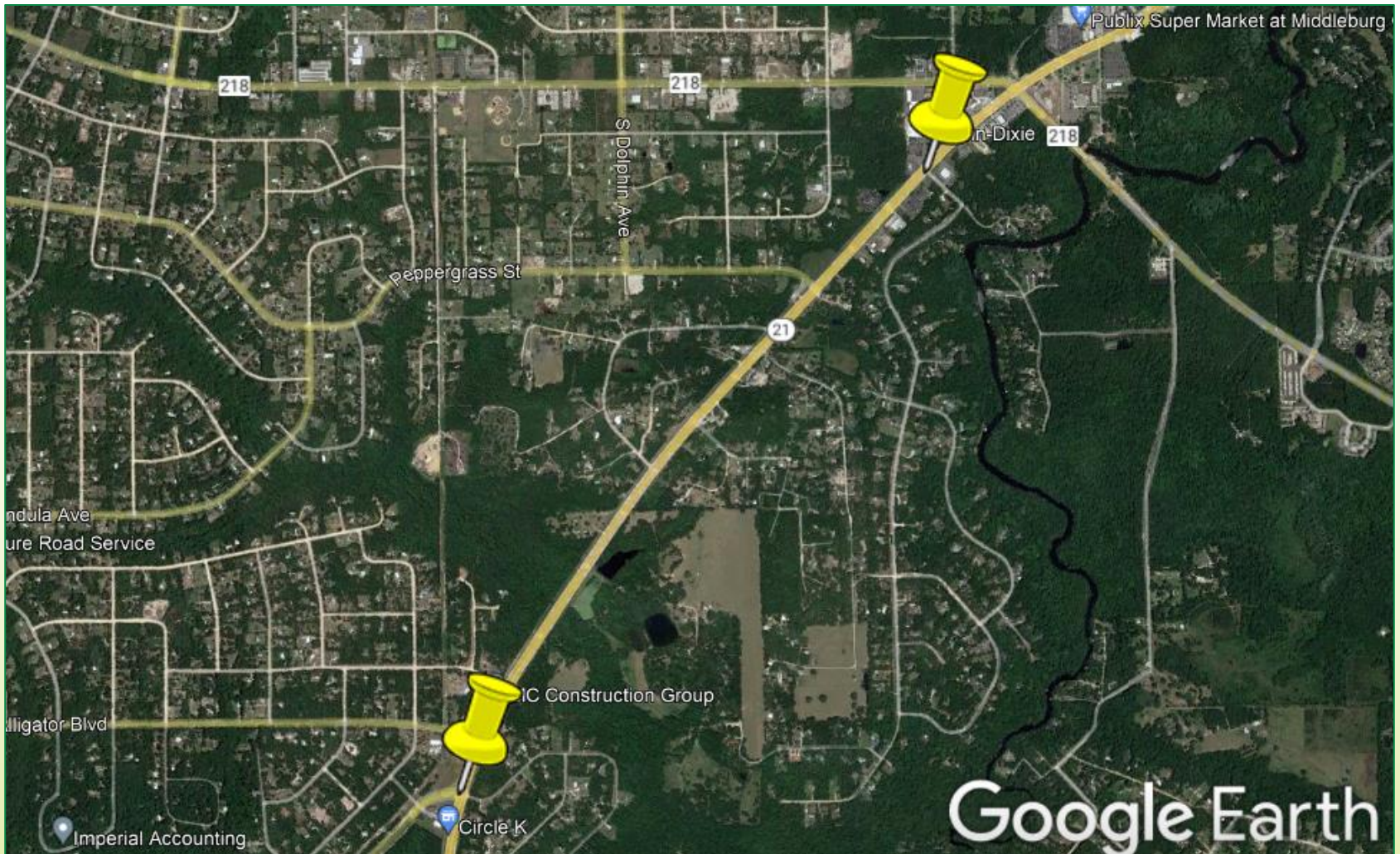
Nominated by Larry Porter, District 2 Wildflower Coordinator



**Best diversity of naturalized wildflowers in District 2**

- 2-mile segment of SR-21 in Clay County
- And under construction!
- Resulted from maintenance practices and the respect shown to the right-of-way during construction





SR-21, Middleburg, from CR-215 to Halperns Way (Clay County)

# **\*Honorable Mention\***

## **District 3 – Chipley District Office**

Nominated by Dustie Moss, District 3 Wildflower Coordinator



### ***Pollinators plants to support Monarch Butterflies and other pollinators***

- Using sustainable integrated vegetation management practices
- Inspired by the nationwide Candidate Conservation Agreement with Assurances for the Monarch Butterfly on Energy and Transportation Lands
- Native and non-native wildflowers serve as nectar plants



SR-77 at the I-10 Interchange (Washington County)  
Wildflower areas highlighted in green



Before and After Photos of Drummond Phlox along SR-77 near the I-10 Interchange (Washington County)



Feathery-foiled Cosmos (not yet flowering) amongst Drummond Phlox

# Thank you!

*In memoriam* Gary Henry, Ella P. Woods Paths of Sunshine Award Co-Founder  
Dick Bush, Former FDOT District 2 Wildflower Coordinator

Jeff Caster (ret.) (FDOT, Office of Design)

Brenda Luedeman (FFGC Roadside Beautification & Paths of Sunshine Chairman)

Rudy Powell (FDOT, Office of Maintenance)

Carolyn Schaag (FFGC Wildflower Liaison Chairman)

Jon Heller (FDOT, Office of Maintenance)

Jurists: FDOT – Jeff Caster, Jeff Norcini  
FFGC – Brenda Luedeman, Carol Hall,  
Sue Angle, Christy Linke  
Master Gardener – Dena Wild

*All nominees and award winners*



This presentation was composed by Jeff Norcini, *FDOT Wildflower & Horticultural Specialist* and Brenda Luedeman, *FFGC, Chair, Ella P. Woods Paths of Sunshine Award & Roadside Beautification*