

ELLA P. WOODS
PATHS OF
SUNSHINE
2023 AWARDS



First Place

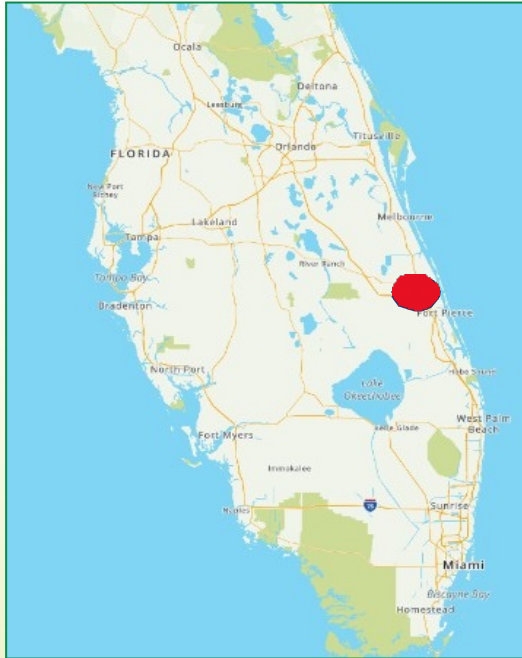
Turnpike Enterprise – Roadway Maintenance

Nomination/Application: Andrew Seibel, Environmental Specialist Consultant



One of the most stunning wildflower displays in turnpike history

- Neary 14 acres over 2 sites
- Goldenmane tickseed (*Coreopsis basalis*), Lanceleaf tickseed (*C. lanceolata*), Annual phlox (*Phlox drummondii*), and Black-eyed Susan (*Rudbeckia hirta*)
- Enhances native wildflower communities along this stretch of the turnpike corridor
- Complements adjacent ecosystems



Medians of Turnpike Mainline (SR-91) at MP 216 and MP 226 (Osceola County). Red area on map (left) shows the location of plantings.



MP 216



MP 216

Site were prepared in summer/early fall 2021; seed sown late fall 2021



Site were prepared in summer/early fall 2021; seed sown late fall 2021



Future Goals

→ MP 216

→ Plant another infield

→ Expand northern most plot by 50%

→ MP 226

→ Wrap the wildflowers even more around the pine flatwoods and cypress swamps

→ When next seeded include Leavenworth's tickseed (*Coreopsis leavenworthii*), and Milkweed (*Asclepias*) for the Monarch butterflies

Second Place

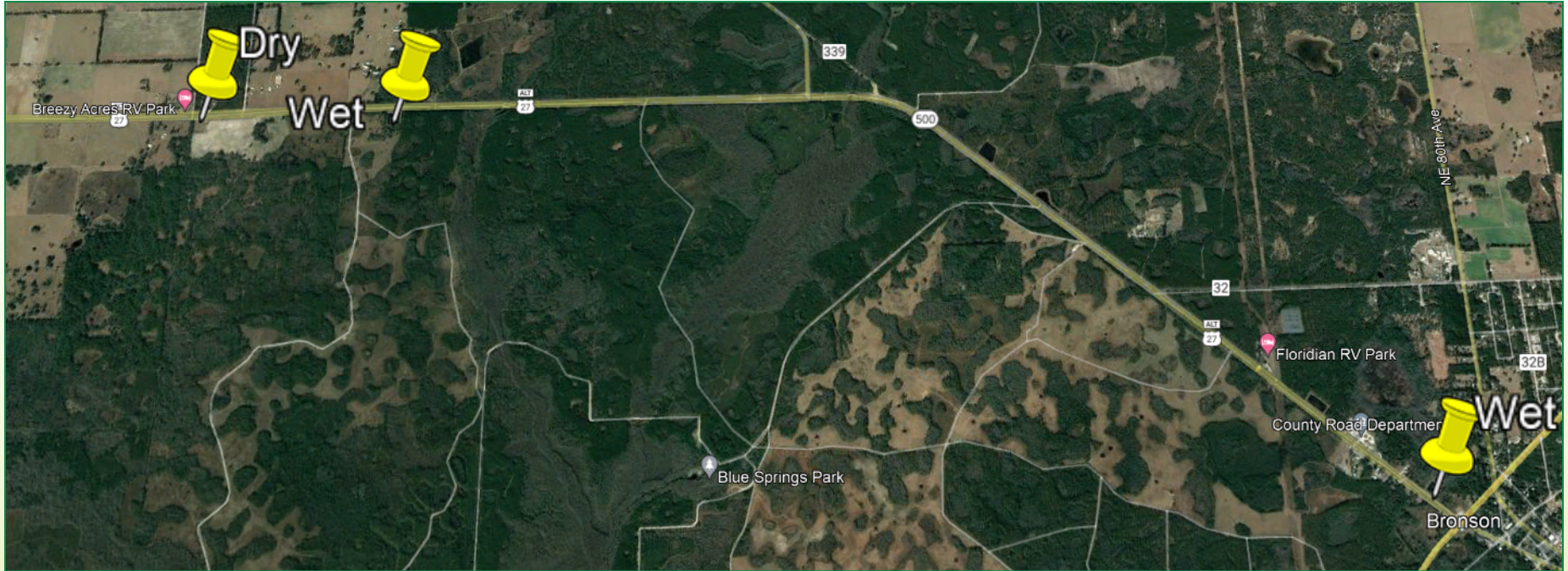
District 2 – Chiefland Maintenance

Nomination: Cindy Tramel, Deputy District Maintenance Administrator and Douglas Steele (Ret.), Contracts Coordinator
Application: Patrick Upshaw, Maintenance Engineer



Monarch butterfly/pollinator habitat

- Research project with Dr. Jaret Daniels, Univ. of Florida
- Purpose: Can wet and dry retention pond areas be planted and managed as habitats for the monarch butterfly and other pollinators?
- Planted native milkweeds as well as native nectar plants



Pond Locations: US-27A (SR-500) between Chiefland and Bronson (Levy County)

Third Place

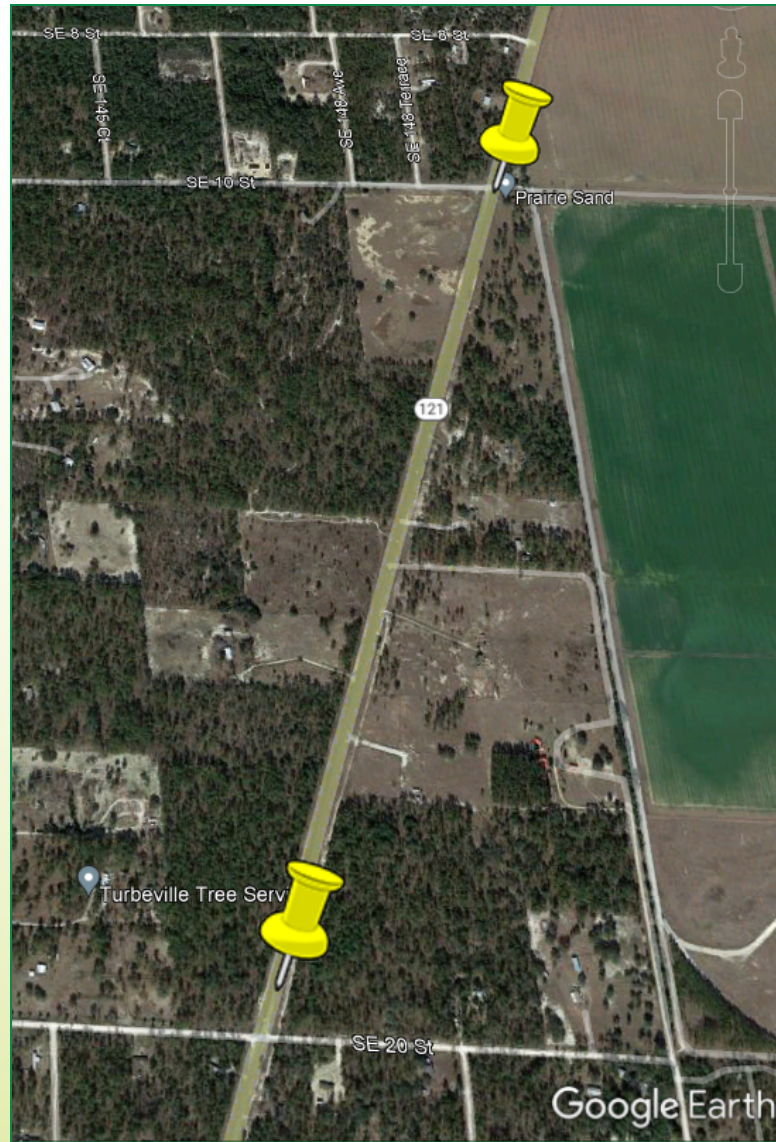
District 2 – Chiefland Maintenance

Nomination: Cindy Tramel, Deputy District Maintenance Administrator
Application: Patrick Upshaw, Maintenance Engineer



Mapping native milkweeds on SR-121

- Research project with Univ. of Florida and Duke Univ.
- Native milkweeds are critical to the spring monarch re-migration and colonization in Florida
- Chiefland Maintenance Office is protecting milkweed areas by marking them with signs so that that these areas are not mowed

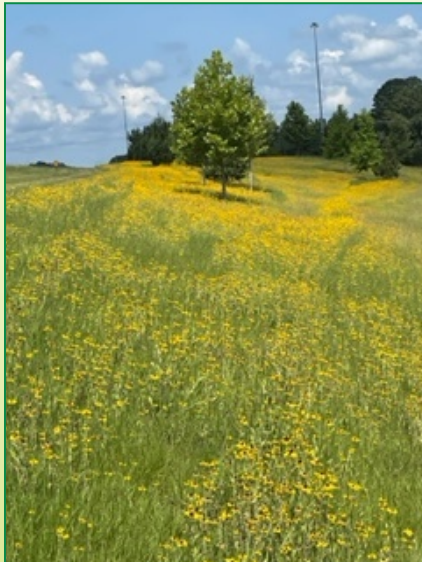


SR-121, approx. 6.5 miles southwest of US-41 in Williston (Levy County)

Honorable Mention

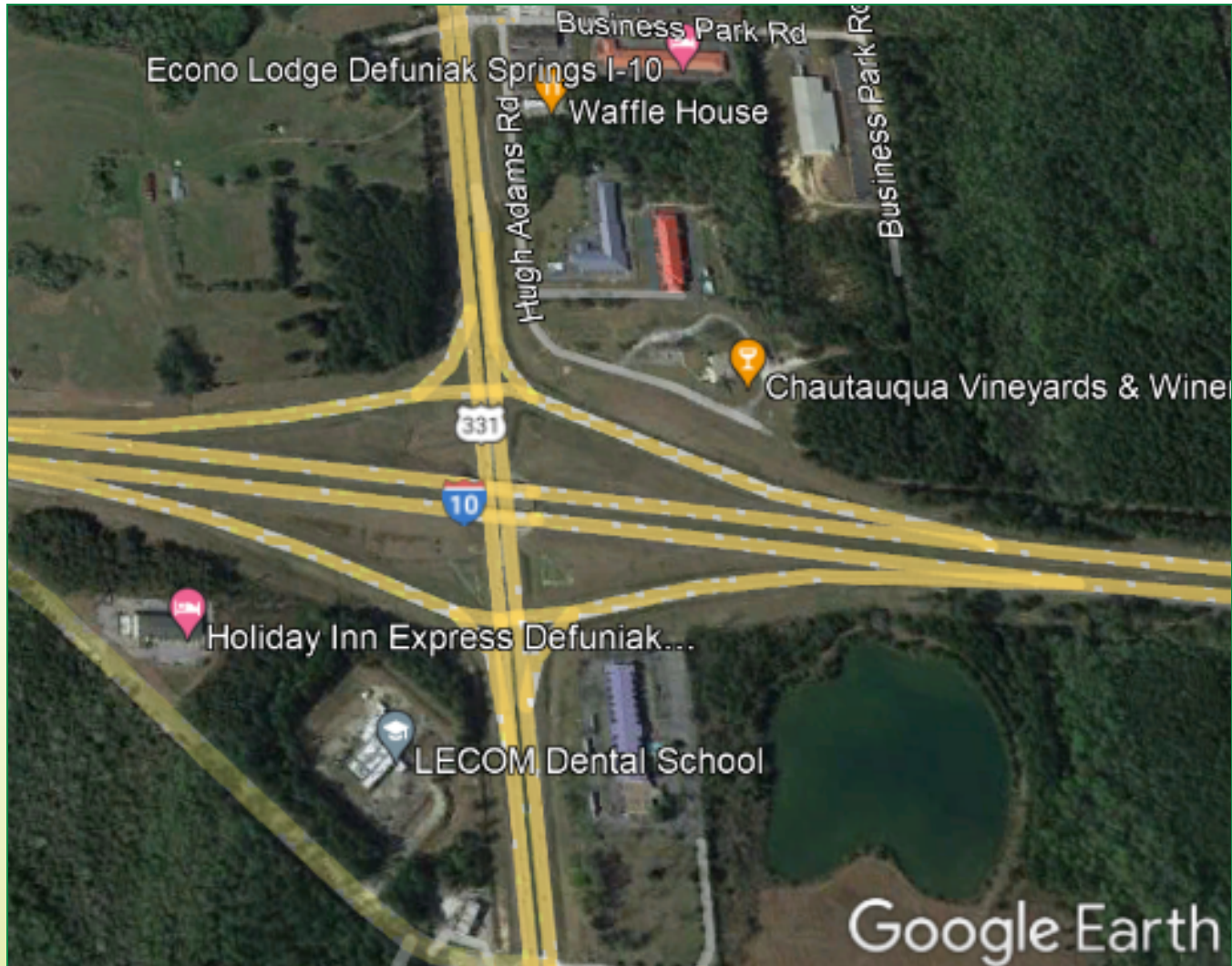
District 3 – Chipley District Office

Nomination/Application: Kristi Patterson, District 3 Wildflower Coordinator



Wildflowers to support Monarch butterflies and other pollinators

- Inspired by the nationwide Candidate Conservation Agreement with Assurances for the Monarch Butterfly on Energy and Transportation Lands
- Native wildflowers serve as nectar plants



SR-83 at the I-10 Interchange, Infield Area (Walton County)



Status and future plans

- Two-phase plan
 - One: Herbicided to treat for undesired weeds and grasses; then seeded native wildflowers
 - Two: Ongoing program of targeted herbicide treatments to reduce undesirable weeds while preserving showy wildflower species, both naturally occurring and introduced

Black-eyed susan (*Rudbeckia hirta*)

Thank you!

All nominees and award winners

In memoriam Gary Henry, Ella P. Woods Paths of Sunshine Award Co-Founder
Dick Bush, Former FDOT District 2 Wildflower Coordinator

Rudy Powell (FDOT, Office of Maintenance)

Jon Heller (FDOT, formerly Office of Maint.)

Kristin Tadlock (FDOT, Office of Maintenance)

Brenda Luedeman (FFGC Roadside Beautification
& Paths of Sunshine Chairman)

Carolyn Schaag (FFGC Wildflower Liaison
Chairman)

Jurists: OecoHort, LLC – Jeff Norcini

FFGC – Brenda Luedeman, Carol Hall,
Sue Angle, Christy Linke

Fla. Wildflower Found.– CJ McCartney

Fla. Master Gardeners – Dena Wild



This presentation was composed by Jeff Norcini, *OecoHort, LLC*, and Brenda Luedeman, *FFGC, Chair, Ella P. Woods Paths of Sunshine Award & Roadside Beautification*